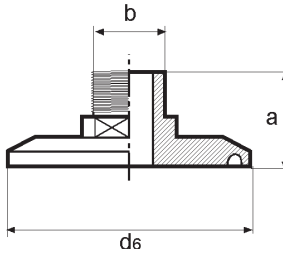


## Clamp Adaptation Clamp/Mâle cône BSP | Clamp Aanpassingstuk Clamp/BSP



Inox 316L Poli/Gepolijst  
 Ra ≤ 0,4µm  
 Material certification 3.1  
 Filet BSPT - Filet BSPP  
 (NPT sur demande)



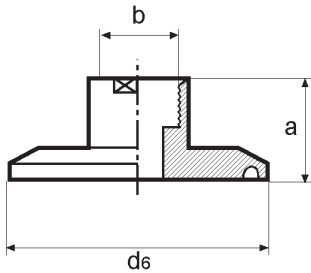
### OD IMPERIAL

DIAM,	1/2" - 3/4"	1" - 1 1/2"	2"	2 1/2"	3"	4"
a	28,0	28,0	35,0	50,0	60,0	60,0
d6	25,0	50,5	64,0	77,5	91,0	119,0
b	1/8" <=> 1"	1/8" <=> 1 1/2"	1/8" <=> 2"	1/8" <=> 2 1/2"	1/4" <=> 3"	1/2" <=> 4"

### DIN 32 676

DIAM,	10 - 15 -20	25 - 32 - 40	50	65	80	100
a	28,0	28,0	35,0	50,0	60,0	60,0
d6	34,0	50,5	64,0	91,0	106,0	119,0
b	1/8" <=> 1"	1/8" <=> 1 1/2"	1/8" <=> 2"	1/8" <=> 2 1/2"	1/4" <=> 3"	1/2" <=> 4"

## Clamp Adaptation Clamp/Femelle BSP | Clamp Aanpassingstuk Clamp/BSP



Inox 316L Poli/Gepolijst  
 Ra ≤ 0,4µm  
 Material certification 3.1  
 Filet BSPT - Filet BSPP  
 (NPT sur demande)



### OD IMPERIAL

DIAM,	1/2" - 3/4"	1" - 1 1/2"	2"	2 1/2"	3"	4"
a	28,0	28,0	35,0	50,0	60,0	60,0
d6	25,0	50,5	64,0	77,5	91,0	119,0
b	1/8" <=> 3/4"	1/8" <=> 1 1/2"	1/8" <=> 2"	1/8" <=> 2 1/2"	1/4" <=> 3"	1/2" <=> 4"

### DIN 32 676

DIAM,	10 - 15 -20	25 - 32 - 40	50	65	80	100
a	28,0	28,0	35,0	50,0	60,0	60,0
d6	34,0	50,5	64,0	91,0	106,0	119,0
b	1/8" <=> 1/2"	1/8" <=> 1"	1/8" <=> 2"	1/8" <=> 3"	1/4" <=> 3"	1/2" <=> 4"