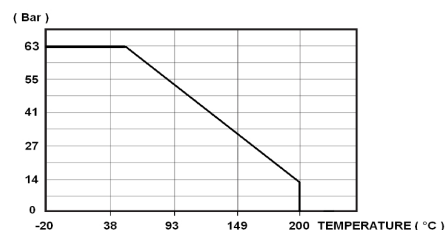
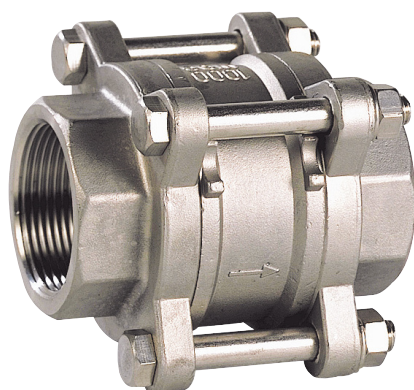


Clapet anti-retour à disque Inox | Terugslagklep RVS

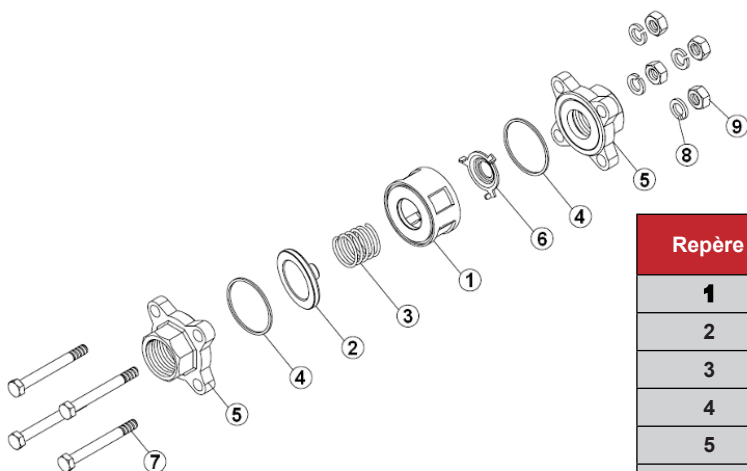


Pression d'ouverture (en mbar)

DN	Position verticale fluide ascendant	Position horizontale
DN 08	25 ↑	23 →
DN 10	25 ↑	23 →
DN 15	25 ↑	23 →
DN 20	25 ↑	23 →
DN 25	25 ↑	23 →
DN 32	27 ↑	24 →
DN 40	29 ↑	25 →
DN 50	29 ↑	25 →
DN 65	31 ↑	25 →
DN 80	32 ↑	26 →
DN 100	33 ↑	27 →

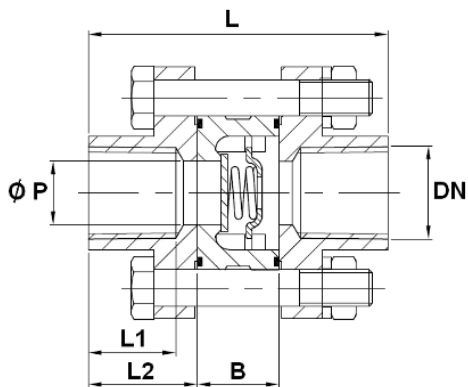
- Dimensions : DN 8 au DN 200
- Raccordement : Femelle-Femelle BSP, à souder BW
- Température Mini : -20°C
- Température Maxi : + 200°C
- Pression Maxi : 63 Bars
- Caractéristiques :
 - Clapet à disque
 - Toutes positions
 - Etanchéité métal/métal

Matière : Acier Inox

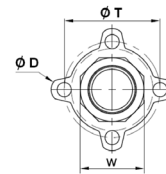


Repère	Désignation	Matériaux 380-381
1	Corps	ASTMA351 CF8M
2	Disque	ASTM A240-316
3	Ressort	Inox 316
4	Joint	PTFE
5	Embouts	ASTMA351 CF8M
6	Butée	ASTM A240-316
7	Vis	Inox 304
8	Rondelles	Inox 304
9	Ecrous	Inox 304

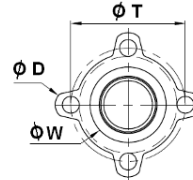
Dimensions modèle taraudé



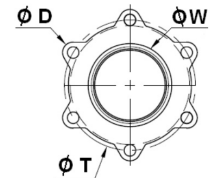
DN 8-50



DN 65-80

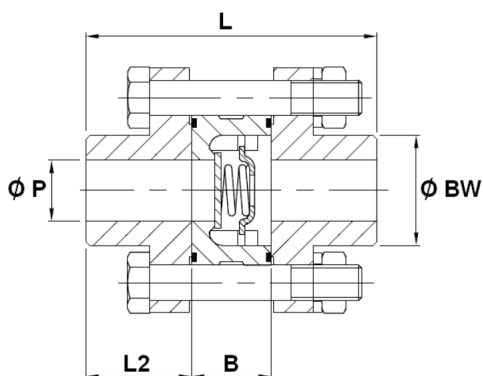


DN 100

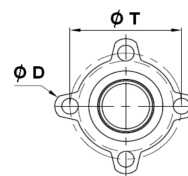


DN	1/4"	3/8"	1/2"	3/4"	1"	1 1/4"	1 1/2"	2"	2 1/2"	3"	4"
Ø P	10	10	14	19	25	31	39	49	64	78	97
L	60	60	63	71	81.5	91	97.5	117	131.5	143.5	174.5
L1	16	16	18	20	20	23	23	27	33	35	45
L2	21	21	22	23.5	26	29	30	35	42	44	52
B	18	18	19	24	29.5	33	37.5	47	47.5	55.5	70.5
Ø D	12	12	14	16	16	18	18	18	18	18	18
Ø T	36.5	36.5	42.7	51.7	58.7	72.7	83.7	98.7	129	153.5	186.5
W	22	22	26	32	39	49	56	69	83	100	122.5
Poids (en kg)	0.3	0.2	0.4	0.5	0.7	1.3	1.7	2.5	4.3	6.2	11

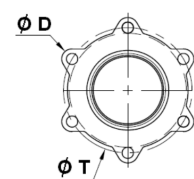
Dimensions modèle à souder BW



DN 8-80



DN 100



DN	8	10	15	20	25	32	40	50	65	80	100
Ø P	10	10	14	19	25	31	39	49	64	78	97
L	66	66	67	81	89.5	92	103.5	117	131.5	143.5	174.5
L2	24	24	24	28.5	30	29.5	33	35	42	44	52
B	18	18	19	24	29.5	33	37.5	47	47.5	55.5	70.5
Ø D	12	12	14	16	16	18	18	18	18	18	18
Ø T	36.5	36.5	42.7	51.7	58.7	72.7	83.7	98.7	129	153.5	186.5
Ø BW	18	20.5	22	28	31.5	40	46	60	78	91.5	121.5
Poids (en kg)	0.3	0.2	0.4	0.5	0.7	1.3	1.7	2.5	4.3	6.2	11