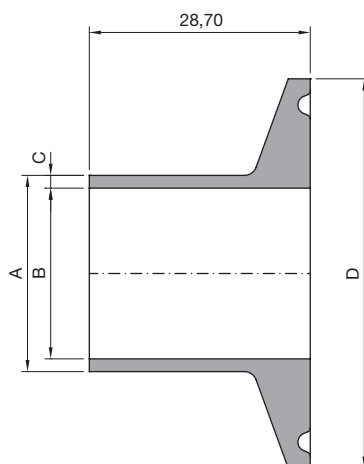


TECHNICAL INFORMATION _ CAT. N. YBPE 4A## TC-#

TRI-CLAMP EXTENDED CONNECTION



Clean and Aseptic Valves of CAD Product Line have simple and safe design, with their full drainability, without asymptotic seal and dead leg, are offering fast cleanability and sterilization practices. They are designed to fulfil stringent demands of CIP-SIP and Production Cycles on Aseptic Processing.

Tri-Clamp Fittings Upgrade. Design according to ASME-BPE regulation. Machined from low ferrite and low sulphur 1.4435 material.

CODE	CAD SIZE	TC SIZE	A mm (inch)	B mm (inch)	C mm (inch)	D mm (inch)	n° of extensions
YBPE 4A12 TC-1	A12	1/2"	12,70 (0,50)	9,40 (0,37)	1,65 (0,065)	25,00 (0,98)	1
YBPE 4A12 TC-2							2
YBPE 4A12 TC-3							3
YBPE 4A12 TC-4							4
YBPE 4A19 TC-1	A19	3/4"	19,05 (0,75)	15,75 (0,62)	1,65 (0,065)	25,00 (0,98)	1
YBPE 4A19 TC-2							2
YBPE 4A19 TC-3							3
YBPE 4A19 TC-4							4
YBPE 4A25 TC-1	A25	1"	25,40 (1,00)	22,10 (0,87)	1,65 (0,065)	50,40 (1,98)	1
YBPE 4A25 TC-2							2
YBPE 4A25 TC-3							3
YBPE 4A25 TC-4							4
YBPE 4A38 TC-1	A38	1,1/2"	38,10 (1,50)	34,80 (1,37)	1,65 (0,065)	50,40 (1,98)	1
YBPE 4A38 TC-2							2
YBPE 4A38 TC-3							3
YBPE 4A38 TC-4							4

CODE	CAD SIZE	TC SIZE	A mm (inch)	B mm (inch)	C mm (inch)	D mm (inch)	n° of extensions
YBPE 4A50 TC-1	A50	2"	50,80 (2,00)	47,50 (1,87)	1,65 (0,065)	64,00 (2,52)	1
YBPE 4A50 TC-2							2
YBPE 4A50 TC-3							3
YBPE 4A50 TC-4							4
YBPE 4A63 TC-1	A63	2,1/2"	63,50 (2,50)	60,20 (2,37)	1,65 (0,065)	77,50 (3,05)	1
YBPE 4A63 TC-2							2
YBPE 4A63 TC-3							3
YBPE 4A63 TC-4							4
YBPE 4A76 TC-1	A76	3"	76,20 (3,00)	72,90 (2,87)	1,65 (0,065)	91,00 (3,58)	1
YBPE 4A76 TC-2							2
YBPE 4A76 TC-3							3
YBPE 4A76 TC-4							4
YBPE 4A00 TC-1	A00	4"	101,60 (4,00)	97,39 (3,83)	2,11 (0,083)	119,00 (4,69)	1
YBPE 4A00 TC-2							2
YBPE 4A00 TC-3							3
YBPE 4A00 TC-4							4

Tri-Clamp design according to ASME BPE

Tri-Clamp material: 1.4435 - BN2