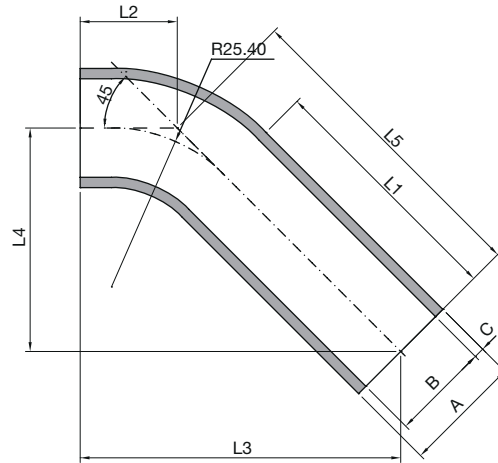


TECHNICAL INFORMATION _ CAT. N. YBPE 5A## 45-#

45° EXTENDED BUTT WELD BPE ELBOW FOR ORBITAL WELDING



Clean and Aseptic Valves of CAD Product Line have simple and safe design, with their full drainability, without asymptotic seal and dead leg, are offering fast cleanability and sterilization practices. They are designed to fulfil stringent demands of CIP-SIP and Production Cycles on Aseptic Processing.

45° Extended Butt Weld Upgrade to perform orbital weldings on CAD Valves connections. Pipe material and dimensions according to ASME-BPE regulations.

CODE	CAD SIZE	A mm (inch)	B mm (inch)	C mm (inch)	L1 mm (inch)	L2 mm (inch)	L3 mm (inch)	L4 mm (inch)	L5 mm (inch)	n° of extensions
YBPE 5A12 45-1	A12	12,70 (0,50)	9,40 (0,37)	1,65 (0,065)	46,00 (1,81)	20,50 (0,81)	61,00 (2,40)	40,50 (1,60)	57,20 (2,25)	1
YBPE 5A12 45-2										2
YBPE 5A12 45-3										3
YBPE 5A12 45-4										4
YBPE 5A19 45-1	A19	19,05 (0,75)	15,75 (0,62)	1,65 (0,065)	46,00 (1,81)	20,50 (0,81)	61,00 (2,40)	40,50 (1,60)	57,20 (2,25)	1
YBPE 5A19 45-2										2
YBPE 5A19 45-3										3
YBPE 5A19 45-4										4
YBPE 5A25 45-1	A25	25,40 (1,00)	22,10 (0,87)	1,65 (0,065)	41,00 (1,61)	26,00 (1,02)	66,00 (2,60)	40,50 (1,60)	57,20 (2,25)	1
YBPE 5A25 45-2										2
YBPE 5A25 45-3										3
YBPE 5A25 45-4										4
YBPE 5A38 45-1	A38	38,10 (1,50)	34,80 (1,37)	1,65 (0,065)	40,00 (1,58)	34,00 (1,34)	78,50 (3,09)	45,00 (1,77)	63,50 (2,50)	1
YBPE 5A38 45-2										2
YBPE 5A38 45-3										3
YBPE 5A38 45-4										4

CODE	CAD SIZE	A mm (inch)	B mm (inch)	C mm (inch)	L1 mm (inch)	L2 mm (inch)	L3 mm (inch)	L4 mm (inch)	L5 mm (inch)	n° of extensions
YBPE 5A50 45-1	A50	50,80 (2,00)	47,50 (1,87)	1,65 (0,065)	44,50 (1,75)	46,50 (1,83)	100,50 (3,96)	54,00 (2,13)	76,20 (3,00)	1
YBPE 5A50 45-2										2
YBPE 5A50 45-3										3
YBPE 5A50 45-4										4
YBPE 5A63 45-1	A63	63,50 (2,50)	60,20 (2,37)	1,65 (0,065)	46,00 (1,81)	54,50 (2,15)	115,00 (4,53)	60,50 (2,38)	85,70 (3,37)	1
YBPE 5A63 45-2										2
YBPE 5A63 45-3										3
YBPE 5A63 45-4										4
YBPE 5A76 45-1	A76	76,20 (3,00)	72,90 (2,87)	1,65 (0,065)	44,50 (1,75)	44,50 (1,75)	157,00 (6,18)	65,00 (2,56)	92,10 (3,63)	1
YBPE 5A76 45-2										2
YBPE 5A76 45-3										3
YBPE 5A76 45-4										4
YBPE 5A00 45-1	A00	101,60 (4,00)	97,39 (3,83)	2,11 (0,083)	51,00 (2,01)	51,00 (2,01)	195,00 (7,68)	81,00 (3,19)	114,30 (4,50)	1
YBPE 5A00 45-2										2
YBPE 5A00 45-3										3
YBPE 5A00 45-4										4

Pipe design according to ASTM® A269/270 - ASME BPE

Pipe material: AISI 316L according to ASME BPE

Optional: 1.4435 - BN2