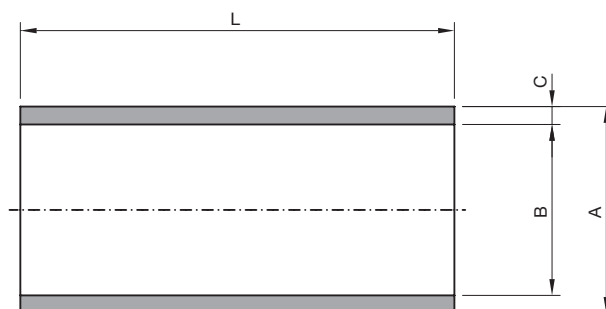


TECHNICAL INFORMATION _ CAT. N. YBPE 2A## 40-#

40mm EXTENDED BUTT WELD BPE PIPE FOR ORBITAL WELDING



Clean and Aseptic Valves of CAD Product Line have simple and safe design, with their full drainability, without asymptotic seal and dead leg, are offering fast cleanability and sterilization practices. They are designed to fulfil stringent demands of CIP-SIP and Production Cycles on Aseptic Processing.

40mm Extended Butt Weld Upgrade to perform orbital weldings on CAD Valves connections. Pipe material and dimensions according to ASME-BPE regulations.

CODE	CAD SIZE	A mm (inch)	B mm (inch)	C mm (inch)	L mm (inch)	n° of extensions
YBPE 2A12 40-1	A12	12,70 (0,50)	9,40 (0,37)	1,65 (0,065)	40,00 (1,58)	1
YBPE 2A12 40-2						2
YBPE 2A12 40-3						3
YBPE 2A12 40-4						4
YBPE 2A19 40-1	A19	19,05 (0,75)	15,75 (0,62)	1,65 (0,065)	40,00 (1,58)	1
YBPE 2A19 40-2						2
YBPE 2A19 40-3						3
YBPE 2A19 40-4						4
YBPE 2A25 40-1	A25	25,40 (1,00)	22,10 (0,87)	1,65 (0,065)	40,00 (1,58)	1
YBPE 2A25 40-2						2
YBPE 2A25 40-3						3
YBPE 2A25 40-4						4
YBPE 2A38 40-1	A38	38,10 (1,50)	34,80 (1,37)	1,65 (0,065)	40,00 (1,58)	1
YBPE 2A38 40-2						2
YBPE 2A38 40-3						3
YBPE 2A38 40-4						4

CODE	CAD SIZE	A mm (inch)	B mm (inch)	C mm (inch)	L mm (inch)	n° of extensions
YBPE 2A50 40-1	A50	50,80 (2,00)	47,50 (1,87)	1,65 (0,065)	40,00 (1,58)	1
YBPE 2A50 40-2						2
YBPE 2A50 40-3						3
YBPE 2A50 40-4						4
YBPE 2A63 40-1	A63	63,50 (2,50)	60,20 (2,37)	1,65 (0,065)	40,00 (1,58)	1
YBPE 2A63 40-2						2
YBPE 2A63 40-3						3
YBPE 2A63 40-4						4
YBPE 2A76 40-1	A76	76,20 (3,00)	72,90 (2,87)	1,65 (0,065)	40,00 (1,58)	1
YBPE 2A76 40-2						2
YBPE 2A76 40-3						3
YBPE 2A76 40-4						4
YBPE 2A00 40-1	A00	101,60 (4,00)	97,39 (3,83)	2,11 (0,083)	40,00 (1,58)	1
YBPE 2A00 40-2						2
YBPE 2A00 40-3						3
YBPE 2A00 40-4						4

Pipe design according to ASTM® A269/270 - ASME BPE

Pipe material: AISI 316L according to ASME BPE

Optional: 1.4435 - BN2