

# ACTUATORS

A  
B  
C  
D  
E  
F  
G  
H  
I  
J

**H 005**  
Manual Actuators

**H 007**  
Manual Actuators  
for Atex App.

**H 008**  
90° Hand Knob with Sensor

**H 010**  
90° Extended Hand Knob  
300mm Straight Version

**H 011**  
90° Extended Hand Knob  
300mm Straight Version  
for Atex App.

**H 012**  
90° Extended Hand Knob  
2 Cardans Version

**H 013**  
90° Extended Hand Knob  
2 Cardans Version  
for Atex App.

**H 025**  
Pneumatic Actuators NC

**H 026**  
Pneumatic Actuators NC  
For Atex App.

**H 027**  
Pneumatic Actuators NC  
for applications up to 16 bar

**H 028**  
Pneumatic Actuators Nc  
for Atex Applications  
up to 16 bar

**H 030**  
Pneumatic Actuators NO

**H 031**  
Pneumatic Actuators NO  
for Atex App.

**H 033**  
Pneumatic Actuators DE

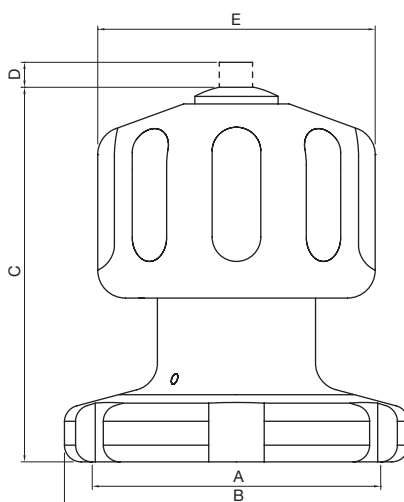
**H 034**  
Pneumatic Actuators DE  
for Atex App.

**H 060**  
Double Position Sensor

**H 080**  
Control Unit  
for Flow Control Valve

TECHNICAL INFORMATION \_ CAT. N. YACT HNKN 0##0 X0000

## MANUAL ACTUATORS



Clean and Aseptic Valves of CAD Product Line have simple and safe design, with their full drainability, without asymptotic seal and dead leg, are offering fast cleanability and sterilization practices. They are designed to fulfil stringent demands of CIP-SIP and Production Cycles on Aseptic Processing.

**HNKN** - Manual Actuator are designed to control the PTFE diaphragm of the CAD Clean and Aseptic Valves on SAFE areas. It has few and simple moveable parts which results in a very reliable component and low maintenance cost. For applications with CAD Double Position Sensor, please see H008: YACT HNDS 0##0 X000.

CODE	A	B mm (inch)	C mm (inch)	D mm (inch)	E mm (inch)	SIZE
YACT-HNKN-0120-X0000	M34x1	39,50 (1,56)	62,00 (2,44)	2,50 (0,10)	39,50 (1,56)	A12
YACT-HNKN-0190-X0000	M50x1	58,00 (2,29)	68,00 (2,68)	4,50 (0,18)	50,00 (1,97)	A19
YACT-HNKN-0250-X0000	M70x1	80,00 (3,15)	82,00 (3,23)	5,50 (0,22)	72,00 (2,84)	A25
YACT-HNKN-0380-X0000	M80x1	99,00 (3,90)	101,50 (4,00)	8,50 (0,34)	110,00 (4,33)	A38
YACT-HNKN-0500-X0000	M103x1,5	119,00 (4,69)	115,50 (4,55)	11,00 (0,43)	110,00 (4,33)	A50

### SPECIFICATION:

CAD SIZE		A12	A19	A25	A38	A50		
MATERIAL	body	1.4404	1.4404	1.4404	1.4404	1.4404		
	locking ring	1.4404	1.4404	1.4404	1.4404	1.4404		
	hand knob	PTFE	PTFE	PTFE	PTFE	PTFE		
DESIGN PRESSURE	max(1) bar(g)	6	6	6	6	6		
	max psi(g)	87	87	87	87	87		
	min bar(g)	-1	-1	-1	-1	-1		
	min psi(g)	-14	-14	-14	-14	-14		

**Environment Temperature:** are autoclavable 135° C

**Application Areas:** SAFE

**Note:** The applied valve body and diaphragm may have different design temperature and/or pressure limits. The weakest component determines the maximum design temperature and pressure limits, when they are assembled.

**Surface Roughness:** External surface  $R_a \leq 0.8\mu\text{m}$  (32 $\mu\text{inch}$ )

**Lubricant:** Actuator are lubricated to workshop and don't need lubrication

**Labeling:** Each Actuator is labeled for full LOT traceability

**Packaging:** The Actuator is packaged in a closed box with Operating and Maintenance bulletin, Certificate of Conformity and Materials Certification 3.1

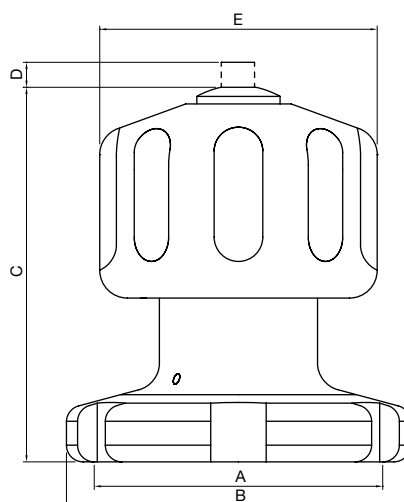
**Quality Control:** Quality Assurance System guarantees the control and traceability of the product.

**Options:** For non-standard Actuator Options, please contact us for further information.

**Orders and Information:** For additional information or to place a order call your nearest Distributor or visit [www.rattiinox.com](http://www.rattiinox.com)

TECHNICAL INFORMATION \_ CAT. N. XACT HNKS 0##0 X0000

## MANUAL ACTUATORS FOR ATEX APP.



Clean and Aseptic Valves of CAD Product Line have simple and safe design, with their full drainability, without asymptotic seal and dead leg, are offering fast cleanability and sterilization practices. They are designed to fulfil stringent demands of CIP-SIP and Production Cycles on Aseptic Processing.

**HNKS** - Manual Actuator are designed to control the PTFE diaphragm of the CAD Clean and Aseptic Valves on ATEX areas. It has few and simple moveable parts which results in a very reliable component and low maintenance cost.

CODE	A	B mm (inch)	C mm (inch)	D mm (inch)	E mm (inch)	SIZE
XACT-HNKS-0120-X0000	M34x1	39,50 (1,56)	62,00 (2,44)	2,50 (0,10)	39,50 (1,56)	A12
XACT-HNKS-0190-X0000	M50x1	58,00 (2,29)	68,00 (2,68)	4,50 (0,18)	50,00 (1,97)	A19
XACT-HNKS-0250-X0000	M70x1	80,00 (3,15)	82,00 (3,23)	5,50 (0,22)	72,00 (2,84)	A25
XACT-HNKS-0380-X0000	M80x1	99,00 (3,90)	101,50 (4,00)	8,50 (0,34)	110,00 (4,33)	A38
XACT-HNKS-0500-X0000	M103x1,5	119,00 (4,69)	115,50 (4,55)	11,00 (0,43)	110,00 (4,33)	A50

**SPECIFICATION:**

CAD SIZE		A12	A19	A25	A38	A50		
MATERIAL	body	1.4404	1.4404	1.4404	1.4404	1.4404		
	locking ring	1.4404	1.4404	1.4404	1.4404	1.4404		
	hand knob	1.4404	1.4404	1.4404	1.4404	1.4404		
DESIGN PRESSURE	max(1) bar(g)	6	6	6	6	6		
	max psi(g)	87	87	87	87	87		
	min bar(g)	-1	-1	-1	-1	-1		
	min psi(g)	-14	-14	-14	-14	-14		

**Environment Temperature:** are autoclavable 135° C

**Application Areas:** ATEX: II 2GD IIA T4 T135°C

**Note:** The applied valve body and diaphragm may have different design temperature and/or pressure limits. The weakest component determines the maximum design temperature and pressure limits, when they are assembled.

**Surface Roughness:** External surface  $R_a \leq 0.8\mu\text{m}$  (32 $\mu\text{inch}$ )

**Lubricant:** Actuator are lubricated to workshop and don't need lubrication

**Labeling:** Each Actuator is labeled for full LOT traceability

**Packaging:** The Actuator is packaged in a closed box with Operating and Maintenance bulletin, Certificate of Conformity and Materials Certification 3.1

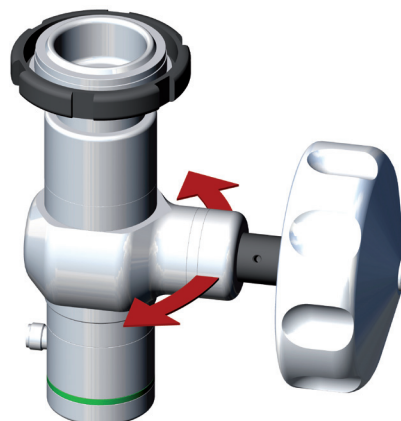
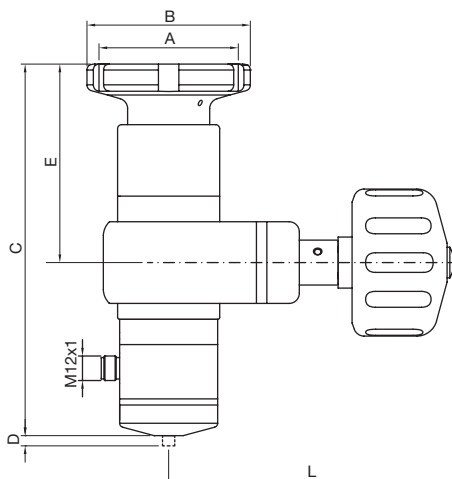
**Quality Control:** Quality Assurance System guarantees the control and traceability of the product.

**Options:** For non-standard Actuator Options, please contact us for further information.

**Orders and Information:** For additional information or to place a order call your nearest Distributor or visit [www.rattiinox.com](http://www.rattiinox.com)

TECHNICAL INFORMATION \_ CAT. N. YACT HNDS 0##0 X0000

## 90° HAND KNOB WITH SENSOR



Clean and Aseptic Valves of CAD Product Line have simple and safe design, with their full drainability, without asymptotic seal and dead leg, are offering fast cleanability and sterilization practices. They are designed to fulfil stringent demands of CIP-SIP and Production Cycles on Aseptic Processing.

**HNDS** - 90° Hand Knob with sensor is designed to control the CAD Clean and Aseptic Valves on SAFE areas for all application where a double position sensor is required. It has few and simple moveable parts which results in a very reliable component and low maintenance cost. Rotating system as standard for an easier assembling. For additional informations on CAD Double position sensore please see H060: YACT-SEND-0XX0-X0000.

CODE	A	B mm (inch)	C mm (inch)	D mm (inch)	E mm (inch)	L mm (inch)	SIZE
YACT-HNDS-0250-X0000	M70x1	80,00 (3,15)	176,00 (6,93)	5,50 (0,22)	97,00 (3,82)	140,00 (5,51)	A25
YACT-HNDS-0380-X0000	M80x1	99,00 (3,90)	201,00 (7,91)	8,50 (0,34)	116,50 (4,59)	140,00 (5,51)	A28
YACT-HNDS-0500-X0000	M103x1,5	119,00 (4,69)	215,50 (0,43)	11,00 (0,43)	131,00 (5,16)	140,00 (5,51)	A50

### SPECIFICATION:

CAD SIZE		A25	A38	A50				
MATERIAL	body	1.4404	1.4404	1.4404				
	locking ring	1.4404	1.4404	1.4404				
	hand knob	PTFE	PTFE	PTFE				
DESIGN PRESSURE	max(1) bar(g)	6	6	6				
	max psi(g)	87	87	87				
	min bar(g)	-1	-1	-1				
	min psi(g)	-14	-14	-14				

**Environment Temperature:** -10 to 80°C (14 to 176°F)

**Application Areas:** SAFE

**Note:** The applied valve body and diaphragm may have different design temperature and/or pressure limits. The weakest component determines the maximum design temperature and pressure limits, when they are assembled.  
For additional informations on CAD Double position sensore please see H060: YACT-SEND-0XX0-X0000.

**Surface Roughness:** External surface  $R_a \leq 0.8\mu\text{m}$  (32μinch)

**Lubricant:** Actuator are lubricated to workshop and don't need lubrication

**Labeling:** Each Actuator is labeled for full LOT traceability

**Packaging:** The Actuator is packaged in a closed box with Operating and Maintenance bulletin, Certificate of Conformity and Materials Certification 3.1

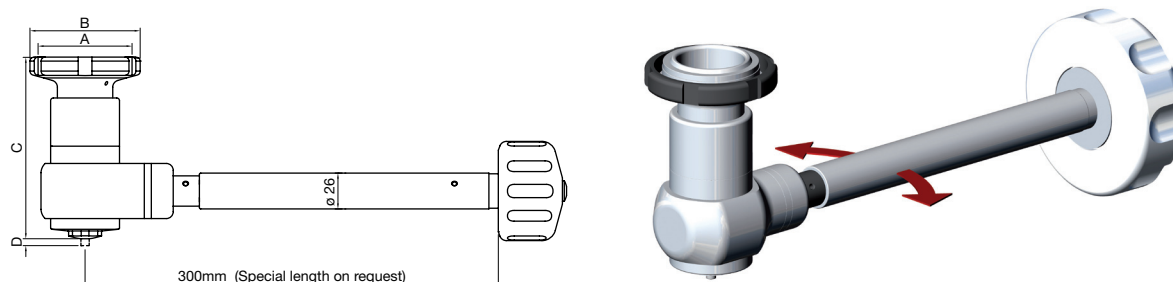
**Quality Control:** Quality Assurance System guarantees the control and traceability of the product.

**Options:** For non-standard Actuator Options or special length, please contact us for further information.

**Orders and Information:** For additional information or to place a order call your nearest Distributor or visit [www.rattiinox.com](http://www.rattiinox.com)

TECHNICAL INFORMATION \_ CAT. N. YACT HNKE 0##0 X0000

## 90° EXTENDED HAND KNOB 300mm STRAIGHT VERSION



Clean and Aseptic Valves of CAD Product Line have simple and safe design, with their full drainability, without asymptotic seal and dead leg, are offering fast cleanability and sterilization practices. They are designed to fulfil stringent demands of CIP-SIP and Production Cycles on Aseptic Processing.

**HNKE** - 90° Extended Hand Knob is designed to control the CAD Clean and Aseptic Valves on SAFE areas for all application where a more comfortable or safe management is required, such as on CAD Bottom Tank Valves. It has few and simple moveable parts which results in a very reliable component and low maintenance cost. Standard extension of 300 mm but special lengths available on request. Rotating system as standard for an easier assembling and ready to be connected to the CAD Double Position Sensor (H060: YACT-SEND-0XX0-X0000).

CODE	A	B mm (inch)	C mm (inch)	D mm (inch)	SIZE
YACT-HNKE-0250-X0000	M70x1	80,00 (3,15)	126,00 (4,96)	5,50 (0,22)	A25
YACT-HNKE-0380-X0000	M80x1	99,00 (3,90)	151,00 (5,95)	8,50 (0,34)	A28
YACT-HNKE-0500-X0000	M103x1,5	119,00 (4,69)	165,50 (6,52)	11,00 (0,43)	A50

**SPECIFICATION:**

CAD SIZE		A25	A38	A50				
MATERIAL	body	1.4404	1.4404	1.4404				
	locking ring	1.4404	1.4404	1.4404				
	hand knob	PTFE	PTFE	PTFE				
DESIGN PRESSURE	max(1) bar(g)	6	6	6				
	max psi(g)	87	87	87				
	min bar(g)	-1	-1	-1				
	min psi(g)	-14	-14	-14				

**Environment Temperature:** are autoclavable 135° C

**Application Areas:** SAFE

**Note:** The applied valve body and diaphragm may have different design temperature and/or pressure limits. The weakest component determines the maximum design temperature and pressure limits, when they are assembled.

**Surface Roughness:** External surface  $R_a \leq 0.8\mu\text{m}$  (32 $\mu\text{inch}$ )

**Lubricant:** Actuator are lubricated to workshop and don't need lubrication

**Labeling:** Each Actuator is labeled for full LOT traceability

**Packaging:** The Actuator is packaged in a closed box with Operating and Maintenance bulletin, Certificate of Conformity and Materials Certification 3.1

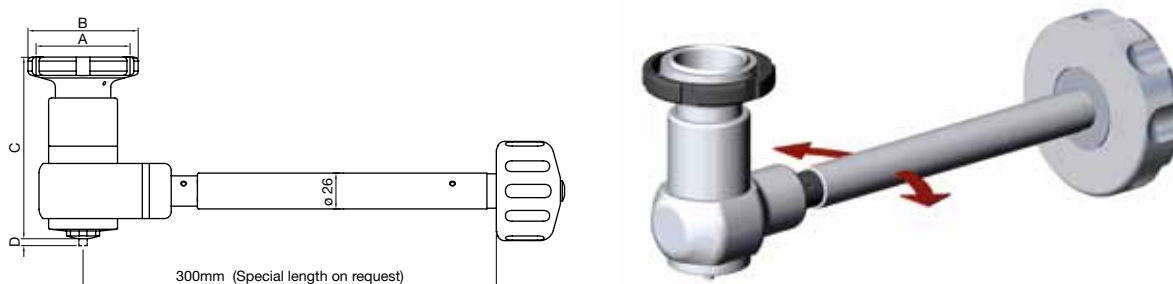
**Quality Control:** Quality Assurance System guarantees the control and traceability of the product.

**Options:** For non-standard Actuator Options or special length, please contact us for further information.

**Orders and Information:** For additional information or to place a order call your nearest Distributor or visit [www.rattiinox.com](http://www.rattiinox.com)

TECHNICAL INFORMATION \_ CAT. N. XACT HNKE 0##0 X0000

# 90° EXTENDED HAND KNOB 300mm STRAIGHT VERSION FOR ATEX APP.



Clean and Aseptic Valves of CAD Product Line have simple and safe design, with their full drainability, without asymptotic seal and dead leg, are offering fast cleanability and sterilization practices. They are designed to fulfil stringent demands of CIP-SIP and Production Cycles on Aseptic Processing.

**XNKE** - 90° Extended Hand Knob is designed to control the CAD Clean and Aseptic Valves on ATEX areas for all application where a more comfortable or safe management is required, such as on CAD Bottom Tank Valves. It has few and simple moveable parts which results in a very reliable component and low maintenance cost. Standard extension of 300 mm but special lengths available on request. Rotating system as standard for an easier assembling and ready to be connected to the CAD Double Position Sensor (H060: XACT-SEND-0XX0-X0000).

CODE	A	B mm (inch)	C mm (inch)	D mm (inch)	SIZE
XACT-HNKE-0250-X0000	M70x1	80,00 (3,15)	126,00 (4,96)	5,50 (0,22)	A25
XACT-HNKE-0380-X0000	M80x1	99,00 (3,90)	151,00 (5,95)	8,50 (0,34)	A28
XACT-HNKE-0500-X0000	M103x1,5	119,00 (4,69)	165,50 (6,52)	11,00 (0,43)	A50

### SPECIFICATION:

CAD SIZE		A25	A38	A50				
MATERIAL	body	1.4404	1.4404	1.4404				
	locking ring	1.4404	1.4404	1.4404				
	hand knob	1.4404	1.4404	1.4404				
DESIGN PRESSURE	max(1) bar(g)	6	6	6				
	max psi(g)	87	87	87				
	min bar(g)	-1	-1	-1				
	min psi(g)	-14	-14	-14				

**Environment Temperature:** are autoclavable 135° C

**Application Areas:** ATEX: II 2GD IIA T4 T135°C

**Note:** The applied valve body and diaphragm may have different design temperature and/or pressure limits. The weakest component determines the maximum design temperature and pressure limits, when they are assembled.

**Surface Roughness:** External surface  $R_a \leq 0.8\mu\text{m}$  (32 $\mu\text{inch}$ )

**Lubricant:** Actuator are lubricated to workshop and don't need lubrication

**Labeling:** Each Actuator is labeled for full LOT traceability

**Packaging:** The Actuator is packaged in a closed box with Operating and Maintenance bulletin, Certificate of Conformity and Materials Certification 3.1

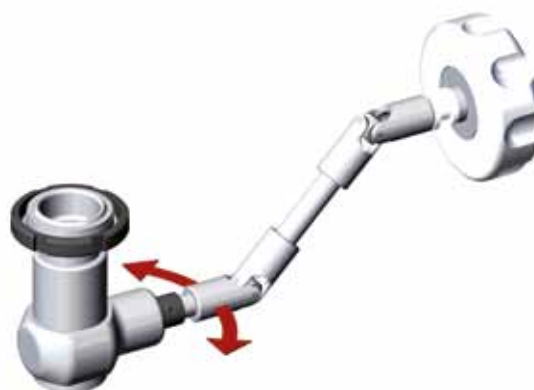
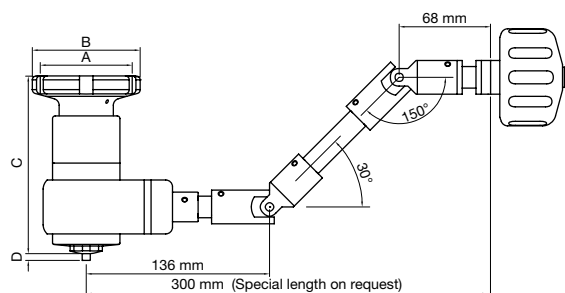
**Quality Control:** Quality Assurance System guarantees the control and traceability of the product.

**Options:** For non-standard Actuator Options or special length, please contact us for further information.

**Orders and Information:** For additional information or to place a order call your nearest Distributor or visit [www.rattiinox.com](http://www.rattiinox.com)

TECHNICAL INFORMATION \_ CAT. N. YACT HNKX 0##0 X0000

## 90° EXTENDED HAND KNOB 2 CARDANS VERSION



Clean and Aseptic Valves of CAD Product Line have simple and safe design, with their full drainability, without asymptotic seal and dead leg, are offering fast cleanability and sterilization practices. They are designed to fulfil stringent demands of CIP-SIP and Production Cycles on Aseptic Processing.

**HNKX** - 90° Extended Hand Knob is designed to control the CAD Clean and Aseptic Valves on SAFE areas for all application where a more comfortable or safe management is required, such as on CAD Bottom Tank Valves. It has few and simple moveable parts which results in a very reliable component and low maintenance cost. The 2 Cardans Version is the optimal solution to reach a comfortable handling position avoiding difficult operating conditions. Standard extension of 300 mm but special lengths available on request. Rotating system as standard for an easier assembling and ready to be connected to the CAD Double Position Sensor (H060: YACT-SEND-0XX0-X0000).

CODE	A	B mm (inch)	C mm (inch)	D mm (inch)	SIZE
YACT-HNKX-0250-X0000	M70x1	80,00 (3,15)	126,00 (4,96)	5,50 (0,22)	A25
YACT-HNKX-0380-X0000	M80x1	99,00 (3,90)	151,00 (5,95)	8,50 (0,34)	A28
YACT-HNKX-0500-X0000	M103x1,5	119,00 (4,69)	165,50 (6,52)	11,00 (0,43)	A50

**SPECIFICATION:**

CAD SIZE		A25	A38	A50				
MATERIAL	body	1.4404	1.4404	1.4404				
	locking ring	1.4404	1.4404	1.4404				
	hand knob	PTFE	PTFE	PTFE				
DESIGN PRESSURE	max(1) bar(g)	6	6	6				
	max psi(g)	87	87	87				
	min bar(g)	-1	-1	-1				
	min psi(g)	-14	-14	-14				

**Environment Temperature:** are autoclavable 135° C

**Application Areas:** SAFE

**Note:** The applied valve body and diaphragm may have different design temperature and/or pressure limits. The weakest component determines the maximum design temperature and pressure limits, when they are assembled.

**Surface Roughness:** External surface  $R_a \leq 0.8\mu\text{m}$  (32 $\mu\text{inch}$ )

**Lubricant:** Actuator are lubricated to workshop and don't need lubrication

**Labeling:** Each Actuator is labeled for full LOT traceability

**Packaging:** The Actuator is packaged in a closed box with Operating and Maintenance bulletin, Certificate of Conformity and Materials Certification 3.1

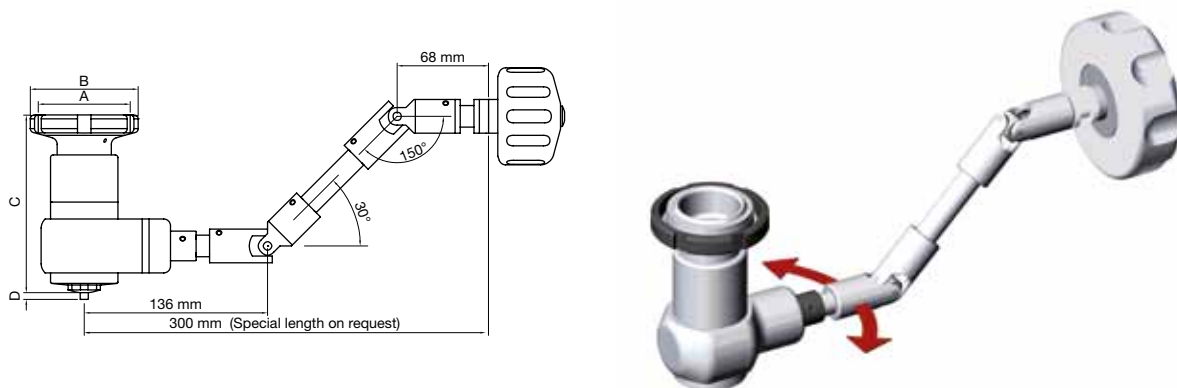
**Quality Control:** Quality Assurance System guarantees the control and traceability of the product.

**Options:** For non-standard Actuator Options or special length, please contact us for further information.

**Orders and Information:** For additional information or to place a order call your nearest Distributor or visit [www.rattiinox.com](http://www.rattiinox.com)

TECHNICAL INFORMATION \_ CAT. N. XACT HNKX 0##0 X0000

# 90° EXTENDED HAND KNOB 2 CARDANS VERSION FOR ATEX APP.



Clean and Aseptic Valves of CAD Product Line have simple and safe design, with their full drainability, without asymptotic seal and dead leg, are offering fast cleanability and sterilization practices. They are designed to fulfil stringent demands of CIP-SIP and Production Cycles on Aseptic Processing.

**HNKX** - 90° Extended Hand Knob is designed to control the CAD Clean and Aseptic Valves on ATEX areas for all application where a more comfortable or safe management is required, such as on CAD Bottom Tank Valves. It has few and simple moveable parts which results in a very reliable component and low maintenance cost. The 2 Cardans Version is the optimal solution to reach a comfortable handling position avoiding difficult operating conditions. Standard extension of 300 mm but special lengths available on request. Rotating system as standard for an easier assembling and ready to be connected to the CAD Double Position Sensor (H060: XACT-SEND-0XX0-X0000).

CODE	A	B mm (inch)	C mm (inch)	D mm (inch)	SIZE
XACT-HNKX-0250-X0000	M70x1	80,00 (3,15)	126,00 (4,96)	5,50 (0,22)	A25
XACT-HNKX-0380-X0000	M80x1	99,00 (3,90)	151,00 (5,95)	8,50 (0,34)	A28
XACT-HNKX-0500-X0000	M103x1,5	119,00 (4,69)	165,50 (6,52)	11,00 (0,43)	A50

### SPECIFICATION:

CAD SIZE		A25	A38	A50				
MATERIAL	body	1.4404	1.4404	1.4404				
	locking ring	1.4404	1.4404	1.4404				
	hand knob	1.4404	1.4404	1.4404				
DESIGN PRESSURE	max(1) bar(g)	6	6	6				
	max psi(g)	87	87	87				
	min bar(g)	-1	-1	-1				
	min psi(g)	-14	-14	-14				

**Environment Temperature:** are autoclavable 135° C

**Application Areas:** ATEX: II 2GD IIA T4 T135°C

**Note:** The applied valve body and diaphragm may have different design temperature and/or pressure limits. The weakest component determines the maximum design temperature and pressure limits, when they are assembled.

**Surface Roughness:** External surface  $R_a \leq 0.8\mu\text{m}$  (32 $\mu\text{inch}$ )

**Lubricant:** Actuator are lubricated to workshop and don't need lubrication

**Labeling:** Each Actuator is labeled for full LOT traceability

**Packaging:** The Actuator is packaged in a closed box with Operating and Maintenance bulletin, Certificate of Conformity and Materials Certification 3.1

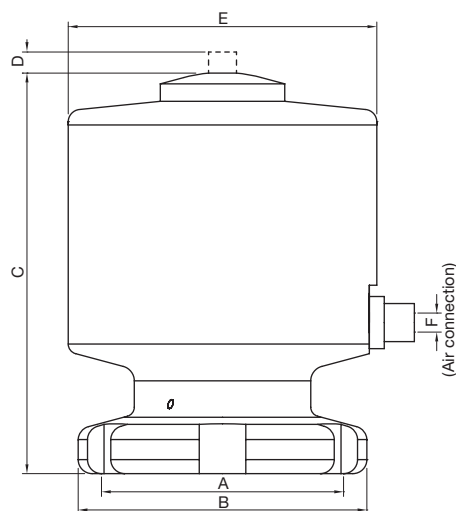
**Quality Control:** Quality Assurance System guarantees the control and traceability of the product.

**Options:** For non-standard Actuator Options or special length, please contact us for further information.

**Orders and Information:** For additional information or to place a order call your nearest Distributor or visit [www.rattiinox.com](http://www.rattiinox.com)

TECHNICAL INFORMATION \_ CAT. N. YACT PANC 0##0 X0000

PNEUMATIC ACTUATORS NC



Clean and Aseptic Valves of CAD Product Line have simple and safe design, with their full drainability, without asymptotic seal and dead leg, are offering fast cleanability and sterilization practices. They are designed to fulfil stringent demands of CIP-SIP and Production Cycles on Aseptic Processing.

**PANC** - Pneumatic Actuator Normally Closed are designed to control the PTFE diaphragm of the CAD Clean and Aseptic Valves for SAFE areas. It has few and simple moveable parts which results in a very reliable component and low maintenance cost.

CODE	A	B mm (inch)	C mm (inch)	D mm (inch)	E mm (inch)	F	SIZE
YACT-PANC-0120-X0000	M34x1	39,50 (1,56)	72,00 (2,84)	2,50 (0,10)	50,00 (1,97)	4,00	A12
YACT-PANC-0190-X0000	M50x1	58,00 (2,29)	80,50 (3,17)	4,50 (0,18)	62,00 (2,44)	4,00	A19
YACT-PANC-0250-X0000	M70x1	80,00 (3,15)	111,00 (4,37)	5,50 (0,22)	79,00 (3,11)	6,00	A25
YACT-PANC-0380-X0000	M80x1	99,00 (3,90)	140,00 (5,51)	8,50 (0,34)	99,00 (3,90)	6,00	A38
YACT-PANC-0500-X0000	M103x1,5	119,00 (4,69)	174,00 (6,85)	11,00 (0,43)	119,00 (4,69)	6,00	A50
YACT-PANC-0630-X0000	M120x1,5	143,00 (5,63)	195,00 (7,68)	14,00 (0,55)	139,00 (5,47)	6,00	A63
YACT-PANC-0760-X0000	M140x1,5	168,00 (6,61)	256,00 (10,08)	17,00 (0,67)	149,00 (5,87)	6,00	A76

### SPECIFICATION:

CAD SIZE		A12	A19	A25	A38	A50	A63	A76
DESIGN PRESSURE	max(1) bar(g)	6	6	6	6	6	6	4
	max psi(g)	87	87	87	87	87	87	58
	min bar(g)	-1	-1	-1	-1	-1	-1	-1
	min psi(g)	-14	-14	-14	-14	-14	-14	-14

Max<sup>(1)</sup>

Max. pressure in bar without leakage at the valve seat

AIR FEED PRESSURE <sup>(2)</sup>	max(1) bar(g)	10	10	10	10	10	10	10
	max psi(g)	140	140	140	140	140	140	140
	min bar(g)	5,5	5,5	5,5	5,5	5,5	5,5	5,5
	min psi(g)	80	80	80	80	80	80	80
	Pneumatic Fast Fitting mm (in.)	M5	M5	1/8"	1/8"	1/8"	1/8"	1/8"
Air feed tube diameter		mm	4	4	6	6	6	6

Compressed Air <sup>(2)</sup>

Compressed Air must be dry and filtered to 10 micron

MATERIAL	1.4404	1.4404	1.4404	1.4404	1.4404	1.4404	1.4404
----------	--------	--------	--------	--------	--------	--------	--------

**Environment Temperature:** 0 to 70 °C (32 to 158 °F)

**Application Areas:** SAFE

**Note:** The applied valve body and diaphragm may have different design temperature and/or pressure limits. The weakest component determines the maximum design temperature and pressure limits, when they are assembled.

**Surface Roughness:** External surface  $R_a \leq 0.8\mu\text{m}$  (32μinch)

**Lubricant:** Actuator are lubricated to workshop and don't need lubrication

**Labeling:** Each Actuator is labeled for full LOT traceability

**Packaging:** The Actuator is packaged in a closed box with Operating and Maintenance bulletin, Certificate of Conformity and Materials Certification 3.1

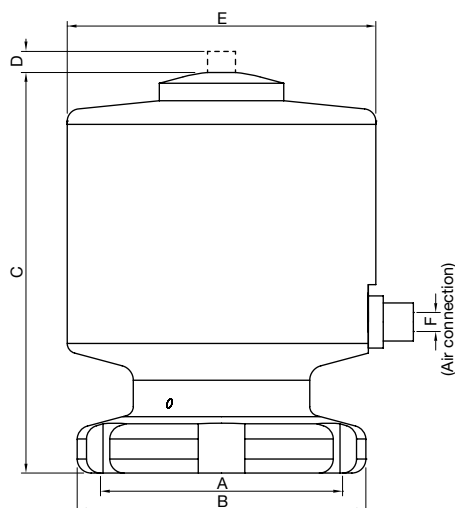
**Quality Control:** Quality Assurance System guarantees the control and traceability of the product.

**Options:** For non-standard Actuator Options, please contact us for further information.

**Orders and Information:** For additional information or to place a order call your nearest Distributor or visit [www.rattiinox.com](http://www.rattiinox.com)

TECHNICAL INFORMATION \_ CAT. N. XACT PANC 0##0 X0000

## PNEUMATIC ACTUATORS NC FOR ATEX APP.



Clean and Aseptic Valves of CAD Product Line have simple and safe design, with their full drainability, without asymptotic seal and dead leg, are offering fast cleanability and sterilization practices. They are designed to fulfil stringent demands of CIP-SIP and Production Cycles on Aseptic Processing.

**PANC** - Pneumatic Actuator Normally Closed are designed to control the PTFE diaphragm of the CAD Clean and Aseptic Valves for ATEX areas. It has few and simple moveable parts which results in a very reliable component and low maintenance cost.

CODE	A	B mm (inch)	C mm (inch)	D mm (inch)	E mm (inch)	F	SIZE
XACT-PANC-0120-X0000	M34x1	39,50 (1,56)	72,00 (2,84)	2,50 (0,10)	50,00 (1,97)	4,00	A12
XACT-PANC-0190-X0000	M50x1	58,00 (2,29)	80,50 (3,17)	4,50 (0,18)	62,00 (2,44)	4,00	A19
XACT-PANC-0250-X0000	M70x1	80,00 (3,15)	111,00 (4,37)	5,50 (0,22)	79,00 (3,11)	6,00	A25
XACT-PANC-0380-X0000	M80x1	99,00 (3,90)	140,00 (5,51)	8,50 (0,34)	99,00 (3,90)	6,00	A38
XACT-PANC-0500-X0000	M103x1,5	119,00 (4,69)	174,00 (6,85)	11,00 (0,43)	119,00 (4,69)	6,00	A50
XACT-PANC-0630-X0000	M120x1,5	143,00 (5,63)	195,00 (7,68)	14,00 (0,55)	139,00 (5,47)	6,00	A63
XACT-PANC-0760-X0000	M140x1,5	168,00 (6,61)	256,00 (10,08)	17,00 (0,67)	149,00 (5,87)	6,00	A76

### SPECIFICATION:

CAD SIZE		A12	A19	A25	A38	A50	A63	A76
DESIGN PRESSURE	max(1) bar(g)	6	6	6	6	6	6	4
	max psi(g)	87	87	87	87	87	87	58
	min bar(g)	-1	-1	-1	-1	-1	-1	-1
	min psi(g)	-14	-14	-14	-14	-14	-14	-14

Max<sup>(1)</sup> Max. pressure in bar without leakage at the valve seat

AIR FEED PRESSURE <sup>(2)</sup>	max(1) bar(g)	10	10	10	10	10	10	10
	max psi(g)	140	140	140	140	140	140	140
	min bar(g)	5,5	5,5	5,5	5,5	5,5	5,5	5,5
	min psi(g)	80	80	80	80	80	80	80
	Pneumatic Fast Fitting mm (in.)	M5	M5	1/8"	1/8"	1/8"	1/8"	1/8"
Air feed tube diameter		mm	4	4	6	6	6	6

Compressed Air <sup>(2)</sup> Compressed Air must be dry and filtered to 10 micron

MATERIAL	1.4404	1.4404	1.4404	1.4404	1.4404	1.4404	1.4404
----------	--------	--------	--------	--------	--------	--------	--------

**Environment Temperature:** 0 to 70 °C (32 to 158 °F)

**Application Areas:** ATEX: II 2GD IIA T4 T135°C

**Note:** The applied valve body and diaphragm may have different design temperature and/or pressure limits. The weakest component determines the maximum design temperature and pressure limits, when they are assembled.

**Surface Roughness:** External surface  $R_a \leq 0.8\mu\text{m}$  (32μinch)

**Lubricant:** Actuator are lubricated to workshop and don't need lubrication

**Labeling:** Each Actuator is labeled for full LOT traceability

**Packaging:** The Actuator is packaged in a closed box with Operating and Maintenance bulletin, Certificate of Conformity and Materials Certification 3.1

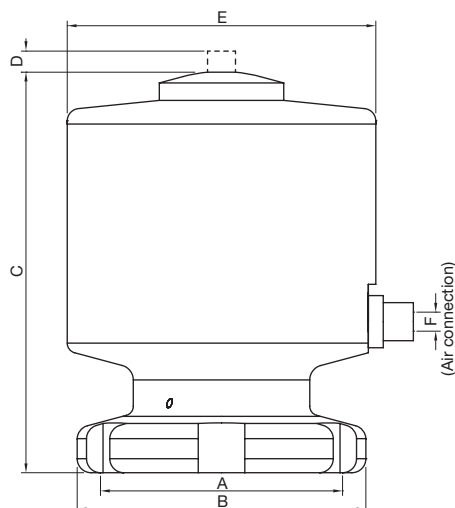
**Quality Control:** Quality Assurance System guarantees the control and traceability of the product.

**Options:** For non-standard Actuator Options, please contact us for further information.

**Orders and Information:** For additional information or to place a order call your nearest Distributor or visit [www.rattiinox.com](http://www.rattiinox.com)

TECHNICAL INFORMATION \_ CAT. N. YACT PANC 0##0 X0016

## PNEUMATIC ACTUATORS NC FOR APPLICATIONS UP TO 16 BAR



Clean and Aseptic Valves of CAD Product Line have simple and safe design, with their full drainability, without asymptotic seal and dead leg, are offering fast cleanability and sterilization practices. They are designed to fulfil stringent demands of CIP-SIP and Production Cycles on Aseptic Processing.

**PANC** - Pneumatic Actuator Normally Closed are designed to control the PTFE diaphragm of the CAD Clean and Aseptic Valves for SAFE areas. It has few and simple moveable parts which results in a very reliable component and low maintenance cost.

CODE	A	B mm (inch)	C mm (inch)	D mm (inch)	E mm (inch)	F	SIZE
YACT-PANC-0120-X0016	M34x1	39,50 (1,56)	77,00 (3,03)	2,50 (0,10)	62,00 (2,44)	4,00	A12
YACT-PANC-0190-X0016	M50x1	58,00 (2,29)	100,00 (3,94)	4,50 (0,18)	79,00 (3,11)	6,00	A19

### SPECIFICATION:

CAD SIZE	A12	A19					
----------	-----	-----	--	--	--	--	--

DESIGN PRESSURE	max(1) bar(g)	16	16				
	max psi(g)	232	232				
	min bar(g)	-1	-1				
	min psi(g)	-14	-14				

Max<sup>(1)</sup> Max. pressure in bar without leakage at the valve seat

AIR FEED PRESSURE <sup>(2)</sup>	max(1) bar(g)	10	10				
	max psi(g)	140	140				
	min bar(g)	5,5	5,5				
	min psi(g)	80	80				
	Pneumatic Fast Fitting mm (in.)	M5 0,23	M5 0,23				
Air feed tube diameter	mm	4	4				

Compressed Air <sup>(2)</sup> Compressed Air must be dry and filtered to 10 micron

MATERIAL	1.4404	1.4404					
----------	--------	--------	--	--	--	--	--

**Environment Temperature:** 0 to 70 °C (32 to 158 °F)

**Application Areas:** SAFE

**Note:** The applied valve body and diaphragm may have different design temperature and/or pressure limits. The weakest component determines the maximum design temperature and pressure limits, when they are assembled.

**Surface Roughness:** External surface  $Ra \leq 0.8\mu m$  (32 $\mu$ inch)

**Lubricant:** Actuator are lubricated to workshop and don't need lubrication

**Labeling:** Each Actuator is labeled for full LOT traceability

**Packaging:** The Actuator is packaged in a closed box with Operating and Maintenance bulletin, Certificate of Conformity and Materials Certification 3.1

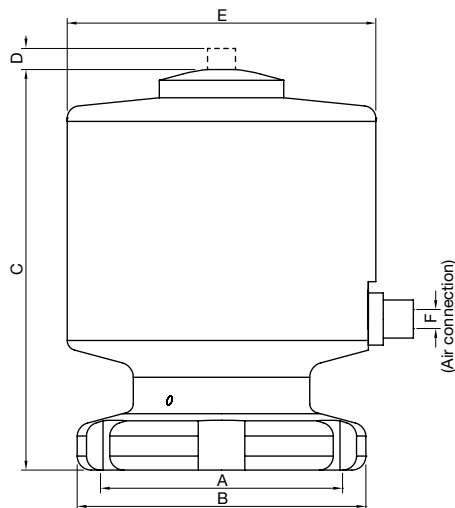
**Quality Control:** Quality Assurance System guarantees the control and traceability of the product.

**Options:** For non-standard Actuator Options, please contact us for further information.

**Orders and Information:** For additional information or to place a order call your nearest Distributor or visit [www.rattiinox.com](http://www.rattiinox.com)

TECHNICAL INFORMATION \_ CAT. N. XACT PANC 0##0 X0016

# PNEUMATIC ACTUATORS NC FOR ATEX APPLICATIONS UP TO 16 BAR



Clean and Aseptic Valves of CAD Product Line have simple and safe design, with their full drainability, without asymptotic seal and dead leg, are offering fast cleanability and sterilization practices. They are designed to fulfil stringent demands of CIP-SIP and Production Cycles on Aseptic Processing.

**PANC** - Pneumatic Actuator Normally Closed are designed to control the PTFE diaphragm of the CAD Clean and Aseptic Valves for ATEX areas. It has few and simple moveable parts which results in a very reliable component and low maintenance cost.

CODE	A	B mm (inch)	C mm (inch)	D mm (inch)	E mm (inch)	F	SIZE
XACT-PANC-0120-X0016	M34x1	39,50 (1,56)	77,00 (3,03)	2,50 (0,10)	62,00 (2,44)	4,00	A12
XACT-PANC-0190-X0016	M50x1	58,00 (2,29)	100,00 (3,94)	4,50 (0,18)	79,00 (3,11)	6,00	A19

**SPECIFICATION:**

CAD SIZE	A12	A19					
----------	-----	-----	--	--	--	--	--

<b>DESIGN PRESSURE</b>	max(1) bar(g)	16	16				
	max psi(g)	232	232				
	min bar(g)	-1	-1				
	min psi(g)	-14	-14				

Max<sup>(1)</sup> Max. pressure in bar without leakage at the valve seat

<b>AIR FEED PRESSURE<sup>(2)</sup></b>	max(1) bar(g)	10	10				
	max psi(g)	140	140				
	min bar(g)	5,5	5,5				
	min psi(g)	80	80				
	Pneumatic Fast Fitting mm (in.)	M5 0,23	M5 0,23				
Air feed tube diameter	mm	4	4				

Compressed Air <sup>(2)</sup> Compressed Air must be dry and filtered to 10 micron

MATERIAL	1.4404	1.4404					
----------	--------	--------	--	--	--	--	--

**Environment Temperature:** 0 to 70 °C (32 to 158 °F)

**Application Areas:** ATEX: II 2GD IIA T4 T135°C

**Note:** The applied valve body and diaphragm may have different design temperature and/or pressure limits. The weakest component determines the maximum design temperature and pressure limits, when they are assembled.

**Surface Roughness:** External surface Ra ≤ 0.8µm (32µinch)

**Lubricant:** Actuator are lubricated to workshop and don't need lubrication

**Labeling:** Each Actuator is labeled for full LOT traceability

**Packaging:** The Actuator is packaged in a closed box with Operating and Maintenance bulletin, Certificate of Conformity and Materials Certification 3.1

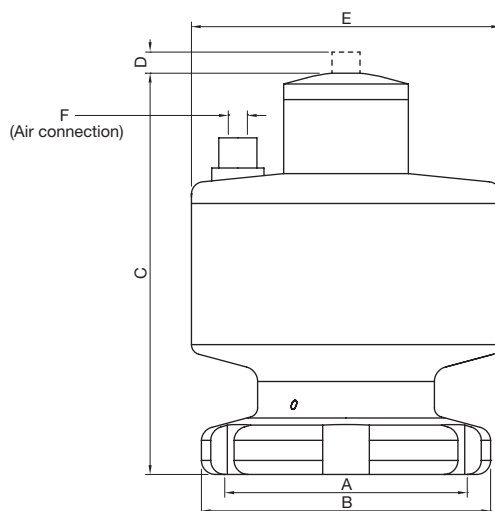
**Quality Control:** Quality Assurance System guarantees the control and traceability of the product.

**Options:** For non-standard Actuator Options, please contact us for further information.

**Orders and Information:** For additional information or to place a order call your nearest Distributor or visit [www.rattiinox.com](http://www.rattiinox.com)

TECHNICAL INFORMATION \_ CAT. N. YACT PANO 0##0 X0000

## PNEUMATIC ACTUATORS NO



Clean and Aseptic Valves of CAD Product Line have simple and safe design, with their full drainability, without asymptotic seal and dead leg, are offering fast cleanability and sterilization practices. They are designed to fulfil stringent demands of CIP-SIP and Production Cycles on Aseptic Processing.

**PANO** - Pneumatic Actuator Normally Open are designed to control the PTFE diaphragm of the CAD Clean and Aseptic Valves for SAFE areas. It has few and simple moveable parts which results in a very reliable component and low maintenance cost.

CODE	A	B mm (inch)	C mm (inch)	D mm (inch)	E mm (inch)	F	SIZE
YACT-PANO-0120-X0000	M34x1	39,50 (1,56)	72,00 (2,84)	2,50 (0,10)	50,00 (1,97)	4,00	A12
YACT-PANO-0190-X0000	M50x1	58,00 (2,29)	80,50 (3,17)	4,50 (0,18)	62,00 (2,44)	4,00	A19
YACT-PANO-0250-X0000	M70x1	80,00 (3,15)	111,00 (4,37)	5,50 (0,22)	79,00 (3,11)	6,00	A25
YACT-PANO-0380-X0000	M80x1	99,00 (3,90)	140,00 (5,51)	8,50 (0,34)	99,00 (3,90)	6,00	A38
YACT-PANO-0500-X0000	M103x1,5	119,00 (4,69)	174,00 (6,85)	11,00 (0,43)	119,00 (4,69)	6,00	A50
YACT-PANO-0630-X0000	M120x1,5	143,00 (5,63)	195,00 (7,68)	14,00 (0,55)	139,00 (5,47)	6,00	A63
YACT-PANO-0760-X0000	M140x1,5	168,00 (6,61)	256,00 (10,08)	17,00 (0,67)	149,00 (5,87)	6,00	A76

**SPECIFICATION:**

CAD SIZE		A12	A19	A25	A38	A50	A63	A76
DESIGN PRESSURE	max(1) bar(g)	6	6	6	6	6	6	4
	max psi(g)	87	87	87	87	87	87	58
	min bar(g)	-1	-1	-1	-1	-1	-1	-1
	min psi(g)	-14	-14	-14	-14	-14	-14	-14

 Max<sup>(1)</sup>

Max. pressure in bar without leakage at the valve seat

AIR FEED PRESSURE <sup>(2)</sup>	max(1) bar(g)	10	10	10	10	10	10	10
	max psi(g)	140	140	140	140	140	140	140
	min bar(g)	5,5	5,5	5,5	5,5	5,5	5,5	5,5
	min psi(g)	80	80	80	80	80	80	80
	Pneumatic Fast Fitting mm (in.)	M5	M5	1/8"	1/8"	1/8"	1/8"	1/8"
Air feed tube diameter		mm	4	4	6	6	6	6

 Compressed Air <sup>(2)</sup>

Compressed Air must be dry and filtered to 10 micron

MATERIAL	1.4404	1.4404	1.4404	1.4404	1.4404	1.4404	1.4404
----------	--------	--------	--------	--------	--------	--------	--------

**Environment Temperature:** 0 to 70 °C (32 to 158 °F)

**Application Areas:** SAFE

**Note:** The applied valve body and diaphragm may have different design temperature and/or pressure limits. The weakest component determines the maximum design temperature and pressure limits, when they are assembled.

**Surface Roughness:** External surface  $R_a \leq 0.8\mu\text{m}$  (32μinch)

**Lubricant:** Actuator are lubricated to workshop and don't need lubrication

**Labeling:** Each Actuator is labeled for full LOT traceability

**Packaging:** The Actuator is packaged in a closed box with Operating and Maintenance bulletin, Certificate of Conformity and Materials Certification 3.1

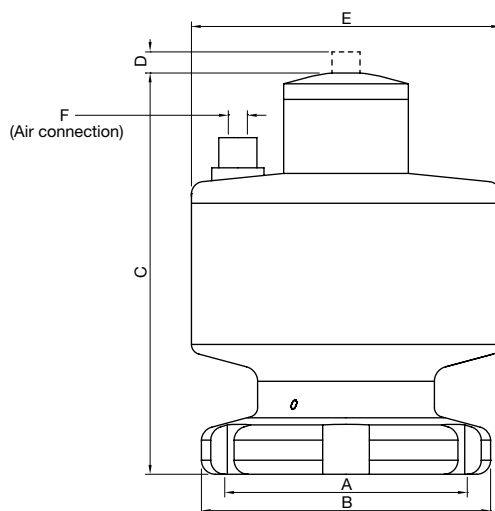
**Quality Control:** Quality Assurance System guarantees the control and traceability of the product.

**Options:** For non-standard Actuator Options, please contact us for further information.

**Orders and Information:** For additional information or to place a order call your nearest Distributor or visit [www.rattiinox.com](http://www.rattiinox.com)

TECHNICAL INFORMATION \_ CAT. N. XACT PANO 0##0 X0000

## PNEUMATIC ACTUATORS NO FOR ATEX APP.



Clean and Aseptic Valves of CAD Product Line have simple and safe design, with their full drainability, without asymptotic seal and dead leg, are offering fast cleanability and sterilization practices. They are designed to fulfil stringent demands of CIP-SIP and Production Cycles on Aseptic Processing.

**PANO** - Pneumatic Actuator Normally Open are designed to control the PTFE diaphragm of the CAD Clean and Aseptic Valves for ATEX areas. It has few and simple moveable parts which results in a very reliable component and low maintenance cost.

CODE	A	B mm (inch)	C mm (inch)	D mm (inch)	E mm (inch)	F	SIZE
XACT-PANO-0120-X0000	M34x1	39,50 (1,56)	72,00 (2,84)	2,50 (0,10)	50,00 (1,97)	4,00	A12
XACT-PANO-0190-X0000	M50x1	58,00 (2,29)	80,50 (3,17)	4,50 (0,18)	62,00 (2,44)	4,00	A19
XACT-PANO-0250-X0000	M70x1	80,00 (3,15)	111,00 (4,37)	5,50 (0,22)	79,00 (3,11)	6,00	A25
XACT-PANO-0380-X0000	M80x1	99,00 (3,90)	140,00 (5,51)	8,50 (0,34)	99,00 (3,90)	6,00	A38
XACT-PANO-0500-X0000	M103x1,5	119,00 (4,69)	174,00 (6,85)	11,00 (0,43)	119,00 (4,69)	6,00	A50
XACT-PANO-0630-X0000	M120x1,5	143,00 (5,63)	195,00 (7,68)	14,00 (0,55)	139,00 (5,47)	6,00	A63
XACT-PANO-0760-X0000	M140x1,5	168,00 (6,61)	256,00 (10,08)	17,00 (0,67)	149,00 (5,87)	6,00	A76

**SPECIFICATION:**

CAD SIZE		A12	A19	A25	A38	A50	A63	A76
DESIGN PRESSURE	max(1) bar(g)	6	6	6	6	6	6	4
	max psi(g)	87	87	87	87	87	87	58
	min bar(g)	-1	-1	-1	-1	-1	-1	-1
	min psi(g)	-14	-14	-14	-14	-14	-14	-14

Max<sup>(1)</sup> Max. pressure in bar without leakage at the valve seat

AIR FEED PRESSURE <sup>(2)</sup>	max(1) bar(g)	10	10	10	10	10	10	10
	max psi(g)	140	140	140	140	140	140	140
	min bar(g)	5,5	5,5	5,5	5,5	5,5	5,5	5,5
	min psi(g)	80	80	80	80	80	80	80
	Pneumatic Fast Fitting mm (in.)	M5	M5	1/8"	1/8"	1/8"	1/8"	1/8"
Air feed tube diameter		mm	4	4	6	6	6	6

Compressed Air <sup>(2)</sup> Compressed Air must be dry and filtered to 10 micron

MATERIAL	1.4404	1.4404	1.4404	1.4404	1.4404	1.4404	1.4404
----------	--------	--------	--------	--------	--------	--------	--------

**Environment Temperature:** 0 to 70 °C (32 to 158 °F)

**Application Areas:** ATEX: II 2GD IIA T4 T135°C

**Note:** The applied valve body and diaphragm may have different design temperature and/or pressure limits. The weakest component determines the maximum design temperature and pressure limits, when they are assembled.

**Surface Roughness:** External surface Ra ≤ 0.8µm (32µinch)

**Lubricant:** Actuator are lubricated to workshop and don't need lubrication

**Labeling:** Each Actuator is labeled for full LOT traceability

**Packaging:** The Actuator is packaged in a closed box with Operating and Maintenance bulletin, Certificate of Conformity and Materials Certification 3.1

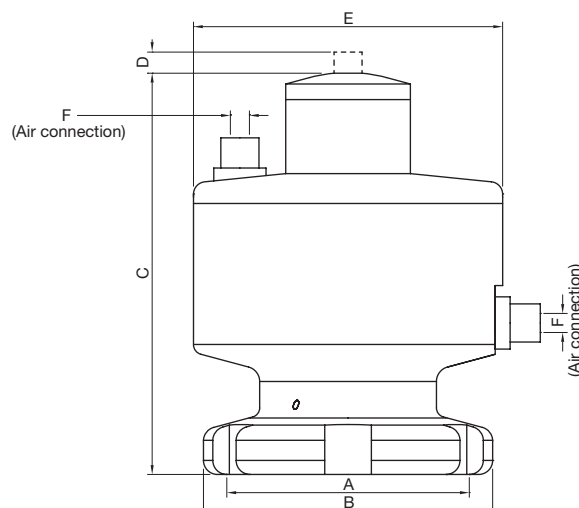
**Quality Control:** Quality Assurance System guarantees the control and traceability of the product.

**Options:** For non-standard Actuator Options, please contact us for further information.

**Orders and Information:** For additional information or to place a order call your nearest Distributor or visit [www.rattiinox.com](http://www.rattiinox.com)

TECHNICAL INFORMATION \_ CAT. N. YACT PADE 0##0 X0000

## PNEUMATIC ACTUATORS DE



Clean and Aseptic Valves of CAD Product Line have simple and safe design, with their full drainability, without asymptotic seal and dead leg, are offering fast cleanability and sterilization practices. They are designed to fulfil stringent demands of CIP-SIP and Production Cycles on Aseptic Processing.

**PADE** - Pneumatic Actuator Double Effect are designed to control the PTFE diaphragm of the CAD Clean and Aseptic Valves for SAFE areas. It has few and simple moveable parts which results in a very reliable component and low maintenance cost.

CODE	A	B mm (inch)	C mm (inch)	D mm (inch)	E mm (inch)	F	SIZE
YACT-PADE-0120-X0000	M34x1	39,50 (1,56)	72,00 (2,84)	2,50 (0,10)	50,00 (1,97)	4,00	A12
YACT-PADE-0190-X0000	M50x1	58,00 (2,29)	80,50 (3,17)	4,50 (0,18)	62,00 (2,44)	4,00	A19
YACT-PADE-0250-X0000	M70x1	80,00 (3,15)	111,00 (4,37)	5,50 (0,22)	79,00 (3,11)	6,00	A25
YACT-PADE-0380-X0000	M80x1	99,00 (3,90)	140,00 (5,51)	8,50 (0,34)	99,00 (3,90)	6,00	A38
YACT-PADE-0500-X0000	M103x1,5	119,00 (4,69)	174,00 (6,85)	11,00 (0,43)	119,00 (4,69)	6,00	A50
YACT-PADE-0630-X0000	M120x1,5	143,00 (5,63)	195,00 (7,68)	14,00 (0,55)	139,00 (5,47)	6,00	A63
YACT-PADE-0760-X0000	M140x1,5	168,00 (6,61)	256,00 (10,08)	17,00 (0,67)	149,00 (5,87)	6,00	A76

**SPECIFICATION:**

CAD SIZE		A12	A19	A25	A38	A50	A63	A76
DESIGN PRESSURE	max(1) bar(g)	6	6	6	6	6	6	4
	max psi(g)	87	87	87	87	87	87	58
	min bar(g)	-1	-1	-1	-1	-1	-1	-1
	min psi(g)	-14	-14	-14	-14	-14	-14	-14

Max<sup>(1)</sup> Max. pressure in bar without leakage at the valve seat

AIR FEED PRESSURE <sup>(2)</sup>	max(1) bar(g)	10	10	10	10	10	10	10
	max psi(g)	140	140	140	140	140	140	140
	min bar(g)	5,5	5,5	5,5	5,5	5,5	5,5	5,5
	min psi(g)	80	80	80	80	80	80	80
	Pneumatic Fast Fitting mm (in.)	M5	M5	1/8"	1/8"	1/8"	1/8"	1/8"
Air feed tube diameter		mm	4	4	6	6	6	6

Compressed Air <sup>(2)</sup> Compressed Air must be dry and filtered to 10 micron

MATERIAL	1.4404	1.4404	1.4404	1.4404	1.4404	1.4404	1.4404
----------	--------	--------	--------	--------	--------	--------	--------

**Environment Temperature:** 0 to 70 °C (32 to 158 °F)

**Application Areas:** SAFE

**Note:** The applied valve body and diaphragm may have different design temperature and/or pressure limits. The weakest component determines the maximum design temperature and pressure limits, when they are assembled.

**Surface Roughness:** External surface  $Ra \leq 0.8\mu m$  (32μinch)

**Lubricant:** Actuator are lubricated to workshop and don't need lubrication

**Labeling:** Each Actuator is labeled for full LOT traceability

**Packaging:** The Actuator is packaged in a closed box with Operating and Maintenance bulletin, Certificate of Conformity and Materials Certification 3.1

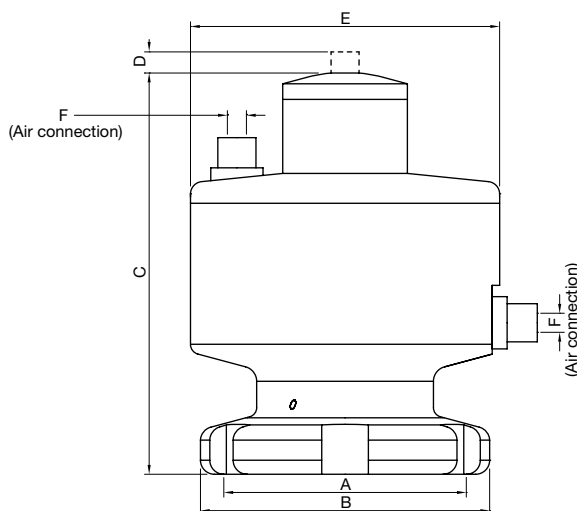
**Quality Control:** Quality Assurance System guarantees the control and traceability of the product.

**Options:** For non-standard Actuator Options, please contact us for further information.

**Orders and Information:** For additional information or to place a order call your nearest Distributor or visit [www.rattiinox.com](http://www.rattiinox.com)

TECHNICAL INFORMATION \_ CAT. N. XACT PADE 0##0 X0000

## PNEUMATIC ACTUATORS DE FOR ATEX APP.



Clean and Aseptic Valves of CAD Product Line have simple and safe design, with their full drainability, without asymptotic seal and dead leg, are offering fast cleanability and sterilization practices. They are designed to fulfil stringent demands of CIP-SIP and Production Cycles on Aseptic Processing.

**PADE** - Pneumatic Actuator Double Effect are designed to control the PTFE diaphragm of the CAD Clean and Aseptic Valves for ATEX areas. It has few and simple moveable parts which results in a very reliable component and low maintenance cost.

CODE	A	B mm (inch)	C mm (inch)	D mm (inch)	E mm (inch)	F	SIZE
XACT-PADE-0120-X0000	M34x1	39,50 (1,56)	72,00 (2,84)	2,50 (0,10)	50,00 (1,97)	4,00	A12
XACT-PADE-0190-X0000	M50x1	58,00 (2,29)	80,50 (3,17)	4,50 (0,18)	62,00 (2,44)	4,00	A19
XACT-PADE-0250-X0000	M70x1	80,00 (3,15)	111,00 (4,37)	5,50 (0,22)	79,00 (3,11)	6,00	A25
XACT-PADE-0380-X0000	M80x1	99,00 (3,90)	140,00 (5,51)	8,50 (0,34)	99,00 (3,90)	6,00	A38
XACT-PADE-0500-X0000	M103x1,5	119,00 (4,69)	174,00 (6,85)	11,00 (0,43)	119,00 (4,69)	6,00	A50
XACT-PADE-0630-X0000	M120x1,5	143,00 (5,63)	195,00 (7,68)	14,00 (0,55)	139,00 (5,47)	6,00	A63
XACT-PADE-0760-X0000	M140x1,5	168,00 (6,61)	256,00 (10,08)	17,00 (0,67)	149,00 (5,87)	6,00	A76

### SPECIFICATION:

CAD SIZE		A12	A19	A25	A38	A50	A63	A76
DESIGN PRESSURE	max(1) bar(g)	6	6	6	6	6	6	4
	max psi(g)	87	87	87	87	87	87	58
	min bar(g)	-1	-1	-1	-1	-1	-1	-1
	min psi(g)	-14	-14	-14	-14	-14	-14	-14

Max<sup>(1)</sup> Max. pressure in bar without leakage at the valve seat

AIR FEED PRESSURE <sup>(2)</sup>	max(1) bar(g)	10	10	10	10	10	10	10
	max psi(g)	140	140	140	140	140	140	140
	min bar(g)	5,5	5,5	5,5	5,5	5,5	5,5	5,5
	min psi(g)	80	80	80	80	80	80	80
	Pneumatic Fast Fitting mm (in.)	M5	M5	1/8"	1/8"	1/8"	1/8"	1/8"
Air feed tube diameter		mm	4	4	6	6	6	6

Compressed Air <sup>(2)</sup> Compressed Air must be dry and filtered to 10 micron

MATERIAL	1.4404	1.4404	1.4404	1.4404	1.4404	1.4404	1.4404
----------	--------	--------	--------	--------	--------	--------	--------

**Environment Temperature:** 0 to 70 °C (32 to 158 °F)

**Application Areas:** ATEX: II 2GD IIA T4 T135°C

**Note:** The applied valve body and diaphragm may have different design temperature and/or pressure limits. The weakest component determines the maximum design temperature and pressure limits, when they are assembled.

**Surface Roughness:** External surface  $Ra \leq 0.8\mu m$  (32μinch)

**Lubricant:** Actuator are lubricated to workshop and don't need lubrication

**Labeling:** Each Actuator is labeled for full LOT traceability

**Packaging:** The Actuator is packaged in a closed box with Operating and Maintenance bulletin, Certificate of Conformity and Materials Certification 3.1

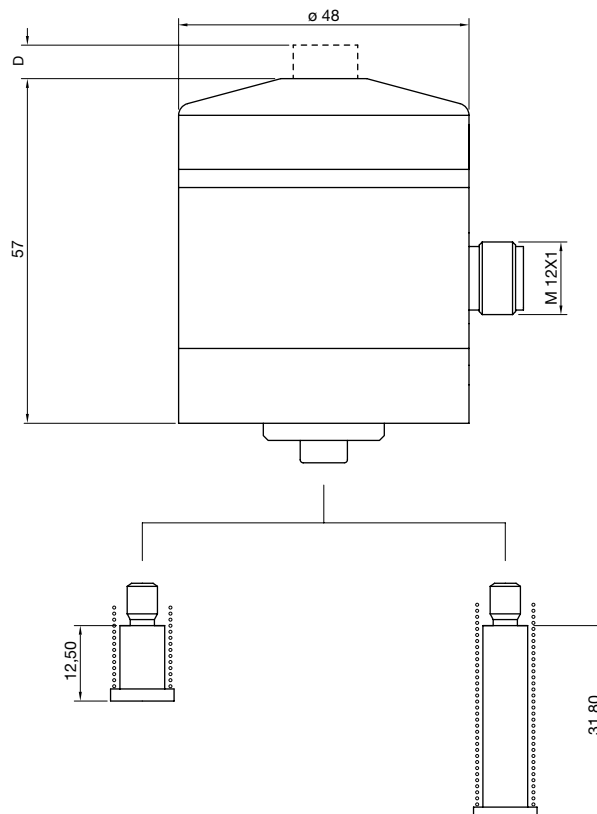
**Quality Control:** Quality Assurance System guarantees the control and traceability of the product.

**Options:** For non-standard Actuator Options, please contact us for further information.

**Orders and Information:** For additional information or to place a order call your nearest Distributor or visit [www.rattiinox.com](http://www.rattiinox.com)

TECHNICAL INFORMATION \_ CAT. N. XACT SEND OXX0 X0000

## DOUBLE POSITION SENSOR



Clean and Aseptic Valves of CAD Product Line have simple and safe design, with their full drainability, without asymptotic seal and dead leg, are offering fast cleanability and sterilization practices. They are designed to fulfil stringent demands of CIP-SIP and Production Cycles on Aseptic Processing.

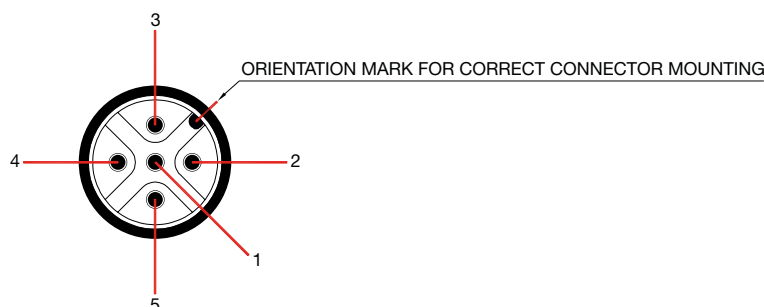
**SEND** - Double Position Sensor provides an indication on the state of the pneumatic valve and on the extended 90° manual actuator, giving the possibility to record the opening and closing positions. The sensor is easy to be programmed using the CAD Programmer (YACT-SENP-OXC0-X0000) or via PLC and can be used for all CAD valves. Same tool for all size of CAD actuators, thanks to the already included adaptors.

SIZE	ADAPTOR LENGHT mm (inch)	D mm (inch)
A12	12,50 (0,49)	2,50 (0,10)
A19	12,50 (0,49)	4,50 (0,18)
A25	31,80 (1,25)	5,50 (0,22)
A38	31,80 (1,25)	8,50 (0,34)
A50	31,80 (1,25)	11,00 (0,43)
A63	31,80 (1,25)	14,00 (0,55)
A76	31,80 (1,25)	17,00 (0,67)
A00	31,80 (1,25)	22,00 (0,87)

### SPECIFICATION:

Power supply	10 ÷ 30VDC
Maximum current consumption without load (@Vin= 30V)	40 mA
Transistor output signaling on opening and closing position (POS1 e POS2)	Tipo: Open collector PNP Imax: 80mA Vmax: 40V
Operating temperature limits	-10°C + 80°C
Temperature limits Storage	-10°C + 80°C
Protection level	IP67
EMC Conformity	EN 61326-1:2006, EN61000-6-2:2006, EN61000-6-3:2007, EN 61326-2-3:2006

### CONNECTIONS DESCRIPTION



CONNECTIONS					
Number	Name	Type	Operation	VDC [V]	MAX I [mA]
1	Vin	supply	positive power	10 ÷ 30	40
2	GND	supply	negative power		
3	SET	input	limits setting		28
4	POS1	output	output signal: valve closed	40	80
5	POS2	output	output signal: valve open	40	80

MATERIAL	AISI 316L - 1.4404
----------	--------------------

**Environment Temperature:** -10 to 80 °C (14 to 176 °F)

**Application Areas:** SAFE & ATEX: II 3GD IIA T6 T80°C X

**Note:** The applied valve body and diaphragm may have different design temperature and/or pressure limits. The weakest component determines the maximum design temperature and pressure limits, when they are assembled.

**Surface Roughness:** External surface  $R_a \leq 0.8\mu\text{m}$  (32μinch)

**Lubricant:** Actuator are lubricated to workshop and don't need lubrication

**Labeling:** Each Actuator is labeled for full LOT traceability

**Packaging:** The Actuator is packaged in a closed box with Operating and Maintenance bulletin and Certificate of Conformity.

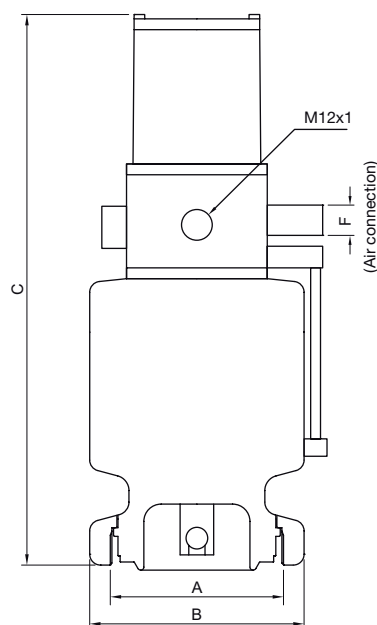
**Quality Control:** Quality Assurance System guarantees the control and traceability of the product.

**Options:** For non-standard Actuator Options, please contact us for further information.

**Orders and Information:** For additional information or to place a order call your nearest Distributor or visit [www.rattiinox.com](http://www.rattiinox.com)

TECHNICAL INFORMATION \_ CAT. N. YACT PANC 0##0 X86##

## CONTROL UNIT FOR FLOW CONTROL VALVE



Clean and Aseptic Valves of CAD Product Line have simple and safe design, with their full drainability, without asymptotic seal and dead leg, are offering fast cleanability and sterilization practices. They are designed to fulfil stringent demands of CIP-SIP and Production Cycles on Aseptic Processing.

**Control Unit** - is designed to control the PTFE diaphragm of the CAD Flow Control Valve (FCV) for SAFE areas. It has few and simple moveable parts which results in a very reliable component and low maintenance cost. Refer to dedicated literature for the operating range and select correct size.

CODE	FCV SIZE	A	B mm (inch)	C mm (inch)	F
YACT-PANC-0190-X8696	FCV19	M70x1	80,00 (3,15)	226,00 (8,90)	6,00
YACT-PANC-0250-X8696	FCV25	M80x1	99,00 (3,90)	255,00 (8,86)	6,00
YACT-PANC-0380-X8694	FCV38	M103x1,5	119,00 (4,69)	282,00 (11,10)	6,00

**SPECIFICATION:**

CAD FCV SIZE	FCV19	FCV25	FCV38				
--------------	-------	-------	-------	--	--	--	--

<b>DESIGN PRESSURE</b>	max(1) bar(g)	6	6	6				
	max psi(g)	87	87	87				
	min bar(g)	-1	-1	-1				
	min psi(g)	-14	-14	-14				

 Max<sup>(1)</sup>

Max. pressure in bar without leakage at the valve seat

<b>AIR FEED PRESSURE<sup>(2)</sup></b>	max(1) bar(g)	7	7	7				
	max psi(g)	101	101	101				
	min bar(g)	5,5	5,5	5,5				
	min psi(g)	80	80	80				
Air feed tube diameter		mm	4	4	6			

 Compressed Air <sup>(2)</sup>

Compressed Air must be dry and filtered to 10 micron

MATERIAL	Stainless steel, PPS, PC, VA, PA 6, ABS							
----------	---	--	--	--	--	--	--	--

**Environment Temperature:** 0 to 70 °C (32 to 158 °F)

**Application Areas:** SAFE

**Note:** The applied valve body and diaphragm may have different design temperature and/or pressure limits. The weakest component determines the maximum design temperature and pressure limits, when they are assembled.

**Lubricant:** Actuator are lubricated to workshop and don't need lubrication

**Labeling:** Each Actuator is labeled for full LOT traceability

**Packaging:** The Actuator is packaged in a closed box with Operating and Maintenance bulletin, Certificate of Conformity and Materials Certification 3.1

**Quality Control:** Quality Assurance System guarantees the control and traceability of the product.

**Options:** For non-standard Actuator Options, please contact us for further information.

**Orders and Information:** For additional information or to place a order call your nearest Distributor or visit [www.rattiinox.com](http://www.rattiinox.com)