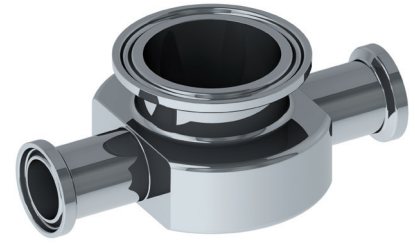


097

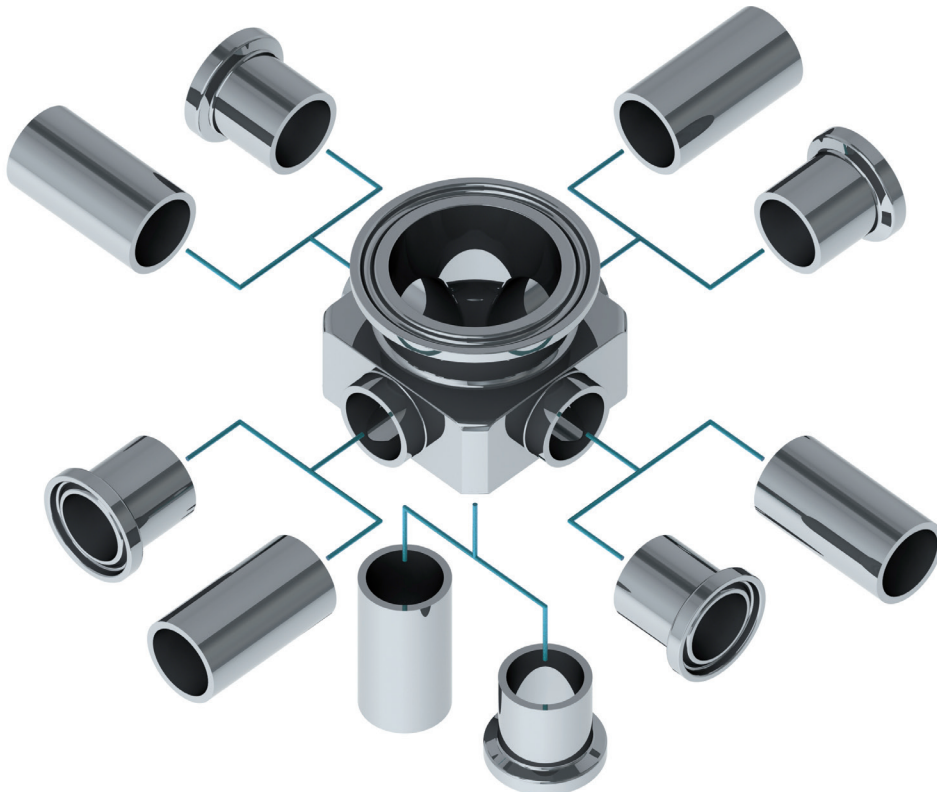
ART.

TRI-CLAMP FITTINGS



INSTRUMENT PORT

Instrument ports are used to adapt pressure and temperature measuring instruments to pipelines reducing dead legs. It has been specifically developed for applications in sterile process engineering. They are available on Tri-Clamp and butt weld ends, for manual and automatic weldings. We can produce special Instrument Ports with several connections on the same piece, to fulfill customer requirements, reducing dimensions and number of parts for sterile pipeline assembly.



TRI-CLAMP FITTINGS

ART. 097/A Long Butt Weld Ends Automatic Welding

Design according to ASME BPE table DT-28

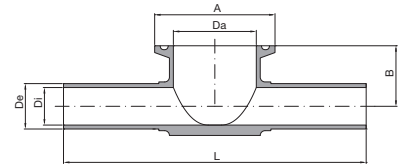
A	Da	B	De	Di	L	Material	Finishing	Code
1.1/2"	34,8	22,20	12,70	9,40	127,00	1.4435-BN2	SF-1	097A50150012 SF1
							SF-4	097A50150012 SF4
		25,40	19,05	15,75	127,00	1.4435-BN2	SF-1	097A50150019 SF1
							SF-4	097A50150019 SF4
		28,60	25,40	22,10	127,00	1.4435-BN2	SF-1	097A50150025 SF1
							SF-4	097A50150025 SF4
2"	47,50	25,40	12,70	9,40	139,80	1.4435-BN2	SF-1	097A50200012 SF1
							SF-4	097A50200012 SF4
		28,60	19,05	15,75	139,80	1.4435-BN2	SF-1	097A50200019 SF1
							SF-4	097A50200019 SF4
		31,80	25,40	22,10	139,80	1.4435-BN2	SF-1	097A50200025 SF1
							SF-4	097A50200025 SF4
		38,10	38,10	34,80	139,80	1.4435-BN2	SF-1	097A50200038 SF1
							SF-4	097A50200038 SF4

SF-1

Int. finishing: $Ra \leq 0,4 \mu\text{m}$ Machined Finish
 Ext. finishing: $Ra \leq 0,8 \mu\text{m}$ Machined Finish

SF-4

Int. finishing: $Ra \leq 0,4 \mu\text{m}$ Electropolished
 Ext. finishing: $Ra \leq 0,8 \mu\text{m}$ Electropolished

**ART. 097/B** Tri-Clamp Ends

Flange design according to ASME BPE

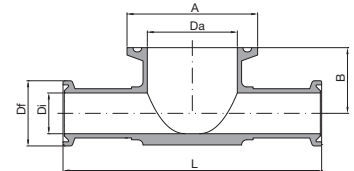
A	Da	B	Df	Di	L	Material	Finishing	Code
1.1/2"	34,8	22,20	25,00	9,40	100,00	1.4435-BN2	SF-1	097B50150012 SF1
							SF-4	097B50150012 SF4
		25,40	25,00	15,75	100,00	1.4435-BN2	SF-1	097B50150019 SF1
							SF-4	097B50150019 SF4
		28,60	50,50	22,10	100,00	1.4435-BN2	SF-1	097B50150025 SF1
							SF-4	097B50150025 SF4
2"	47,50	25,40	25,00	9,40	110,00	1.4435-BN2	SF-1	097B50200012 SF1
							SF-4	097B50200012 SF4
		28,60	25,00	15,75	110,00	1.4435-BN2	SF-1	097B50200019 SF1
							SF-4	097B50200019 SF4
		31,80	50,50	22,10	110,00	1.4435-BN2	SF-1	097B50200025 SF1
							SF-4	097B50200025 SF4
		38,10	50,50	34,80	110,00	1.4435-BN2	SF-1	097B50200038 SF1
							SF-4	097B50200038 SF4

SF-1

Int. finishing: $Ra \leq 0,4 \mu\text{m}$ Machined Finish
 Ext. finishing: $Ra \leq 0,8 \mu\text{m}$ Machined Finish

SF-4

Int. finishing: $Ra \leq 0,4 \mu\text{m}$ Electropolished
 Ext. finishing: $Ra \leq 0,8 \mu\text{m}$ Electropolished

**ART. 097/C** Short Butt Weld Manual Welding

A	Da	B	De	Di	L	Material	Finishing	Code
1.1/2"	34,8	22,20	12,70	9,40	58,00	1.4435-BN2	SF-1	097C50150012 SF1
							SF-4	097C50150012 SF4
		25,40	19,05	15,75	58,00	1.4435-BN2	SF-1	097C50150019 SF1
							SF-4	097C50150019 SF4
		28,60	25,40	22,10	58,00	1.4435-BN2	SF-1	097C50150025 SF1
							SF-4	097C50150025 SF4
2"	47,50	25,40	12,70	9,40	70,00	1.4435-BN2	SF-1	097C50200012 SF1
							SF-4	097C50200012 SF4
		28,60	19,05	15,75	70,00	1.4435-BN2	SF-1	097C50200019 SF1
							SF-4	097C50200019 SF4
		31,80	25,40	22,10	70,00	1.4435-BN2	SF-1	097C50200025 SF1
							SF-4	097C50200025 SF4
		38,10	38,10	34,80	70,00	1.4435-BN2	SF-1	097C50200038 SF1
							SF-4	097C50200038 SF4

SF-1

Int. finishing: $Ra \leq 0,4 \mu\text{m}$ Machined Finish
 Ext. finishing: $Ra \leq 0,8 \mu\text{m}$ Machined Finish

SF-4

Int. finishing: $Ra \leq 0,4 \mu\text{m}$ Electropolished
 Ext. finishing: $Ra \leq 0,8 \mu\text{m}$ Electropolished

