

# NEW

# NEEDLE VALVES



**ART. 049/Z**  
Needle Valves  
Tri-Clamp

P. 060



**ART. 049/W**  
Needle Valves  
Butt Weld

P. 062



**ART. 053**  
Needle Valves  
Gas Threaded

P. 066



**ART. 054**  
Gauge Holder  
Gas Threaded

P. 067

**Characteristics.** Valve body machined from solid compound. Double metal closure, no gaskets between the body and the rod valve guide.

**Documentation.** Laser marking for traceability and validation processes. Material 3.1 certificates, FDA or USP, internal surface finishing check.



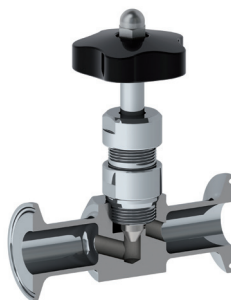
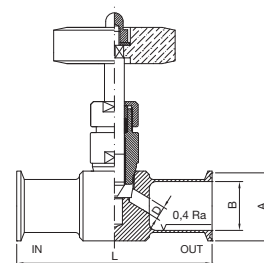
## ASTM A270 Tri-Clamp

Size	Ø A	Ø B	Ø D	Ø L	Valve Material	Gasket Material	Code
1/4"	25,00	4,57	4,00	101,60	1.4404	PTFE - FDA	049Z60025PT70
						PTFE - USP 121	049Z60025PT121
3/8"	25,00	7,75	5,50	101,60	1.4404	PTFE - FDA	049Z60037PT70
						PTFE - USP 121	049Z60037PT121
1/2"	25,00	9,40	5,50	101,60	1.4404	PTFE - FDA	049Z60050PT70
						PTFE - USP 121	049Z60050PT121
3/4"	25,00	15,75	7,00	101,60	1.4404	PTFE - FDA	049Z60075PT70
						PTFE - USP 121	049Z60075PT121
1"	50,50	22,10	9,00	114,30	1.4404	PTFE - FDA	049Z60100PT70
						PTFE - USP 121	049Z60100PT121
1.1/2"	50,50	34,80	11,50	139,70	1.4404	PTFE - FDA	049Z60150PT70
						PTFE - USP 121	049Z60150PT121
2"	64,00	47,50	17,00	158,80	1.4404	PTFE - FDA	049Z60200PT70
						PTFE - USP 121	049Z60200PT121
2.1/2"	77,50	60,20	27,50	212,00	1.4404	PTFE - FDA	049Z60250PT70
						PTFE - USP 121	049Z60250PT121

Int. finishing:  $Ra \leq 0,4 \mu m$   
 Ext. finishing:  $Ra \leq 0,8 \mu m$  Mirror Polished

Max Working Conditions:  
**10 bar (120 psi) and 150°C (300°F)**

Gaskets:  
**FDA approved PTFE**  
 or **USP CLASS VI - 121° PTFE**



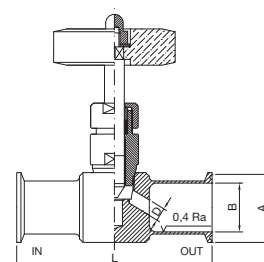
## DIN 32676 Tri-Clamp

Size	Ø A	Ø B	Ø D	Ø L	Valve Material	Gasket Material	Code
DN10	34,00	10,00	5,50	101,60	1.4404	PTFE - FDA	049Z6D010PT70
						PTFE - USP 121	049Z6D010PT121
DN15	34,00	16,00	7,00	87,00	1.4404	PTFE - FDA	049Z6D015PT70
						PTFE - USP 121	049Z6D015PT121
DN20	34,00	20,00	7,00	87,00	1.4404	PTFE - FDA	049Z6D020PT70
						PTFE - USP 121	049Z6D020PT121
DN25	50,50	26,00	9,00	114,30	1.4404	PTFE - FDA	049Z6D025PT70
						PTFE - USP 121	049Z6D025PT121
DN32	50,50	32,00	11,50	139,70	1.4404	PTFE - FDA	049Z6D032PT70
						PTFE - USP 121	049Z6D032PT121
DN40	50,50	38,00	11,50	139,70	1.4404	PTFE - FDA	049Z6D040PT70
						PTFE - USP 121	049Z6D040PT121

Int. finishing:  $Ra \leq 0,4 \mu m$   
 Ext. finishing:  $Ra \leq 0,8 \mu m$  Mirror Polished

Max Working Conditions:  
**10 bar (120 psi) and 150°C (300°F)**

Gaskets:  
**FDA approved PTFE**  
 or **USP CLASS VI - 121° PTFE**





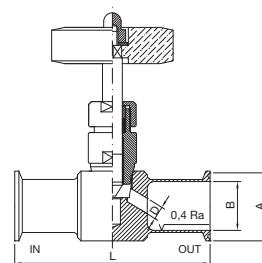
## ISO 1127 Tri-Clamp

Size	Ø A	Ø B	Ø D	Ø L	Valve Material	Gasket Material	Code
DN8	34,00	10,30	5,50	101,60	1.4404	PTFE - FDA	049Z61008PT70
						PTFE - USP 121	049Z61008PT121
DN10	34,00	14,00	5,50	101,60	1.4404	PTFE - FDA	049Z61010PT70
						PTFE - USP 121	049Z61010PT121
DN15	34,00	18,10	7,00	87,00	1.4404	PTFE - FDA	049Z61015PT70
						PTFE - USP 121	049Z61015PT121
DN20	50,50	23,70	9,00	114,30	1.4404	PTFE - FDA	049Z61020PT70
						PTFE - USP 121	049Z61020PT121
DN25	50,50	29,70	9,00	114,30	1.4404	PTFE - FDA	049Z61025PT70
						PTFE - USP 121	049Z61025PT121
DN32	50,50	38,40	11,50	139,70	1.4404	PTFE - FDA	049Z61032PT70
						PTFE - USP 121	049Z61032PT121
DN40	50,50	44,30	11,50	139,70	1.4404	PTFE - FDA	049Z61040PT70
						PTFE - USP 121	049Z61040PT121

Int. finishing:  $Ra \leq 0,4 \mu m$   
 Ext. finishing:  $Ra \leq 0,8 \mu m$  Mirror Polished

Max Working Conditions:  
**10 bar (120 psi) and 150°C (300°F)**

Gaskets:  
**FDA approved PTFE**  
**or USP CLASS VI - 121° PTFE**





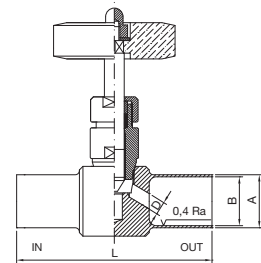
**ASTM A270 Butt Weld**

Size	Ø A	Ø B	Ø D	Ø L	Valve Material	Gasket Material	Code
1/4"	6,35	4,57	4,00	101,60	1.4404	PTFE - FDA	049W60025PT70
						PTFE - USP 121	049W60025PT121
3/8"	9,53	7,75	5,50	101,60	1.4404	PTFE - FDA	049W60037PT70
						PTFE - USP 121	049W60037PT121
1/2"	12,7	9,40	5,50	101,60	1.4404	PTFE - FDA	049W60050PT70
						PTFE - USP 121	049W60050PT121
3/4"	19,05	15,75	7,00	101,60	1.4404	PTFE - FDA	049W60075PT70
						PTFE - USP 121	049W60075PT121
1"	25,40	22,10	9,00	114,30	1.4404	PTFE - FDA	049W60100PT70
						PTFE - USP 121	049W60100PT121
1.1/2"	38,10	34,80	11,50	139,70	1.4404	PTFE - FDA	049W60150PT70
						PTFE - USP 121	049W60150PT121
2"	50,80	47,50	17,00	158,80	1.4404	PTFE - FDA	049W60200PT70
						PTFE - USP 121	049W60200PT121
2.1/2"	63,50	60,20	27,50	212,00	1.4404	PTFE - FDA	049W60250PT70
						PTFE - USP 121	049W60250PT121

Int. finishing: **Ra ≤ 0,4 µm**  
Ext. finishing: **Ra ≤ 0,8 µm Mirror Polished**

Max Working Conditions:  
**10 bar (120 psi) and 150°C (300°F)**

Gaskets:  
**FDA approved PTFE**  
**or USP CLASS VI - 121° PTFE**



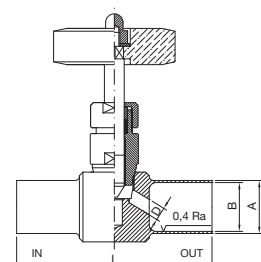
**DIN 32676 Butt Weld**

Size	Ø A	Ø B	Ø D	Ø L	Valve Material	Gasket Material	Code
DN10	13,00	10,00	5,50	101,60	1.4404	PTFE - FDA	049W6D010PT70
						PTFE - USP 121	049W6D010PT121
DN15	19,00	16,00	7,00	87,00	1.4404	PTFE - FDA	049W6D015PT70
						PTFE - USP 121	049W6D015PT121
DN20	23,00	20,00	7,00	87,00	1.4404	PTFE - FDA	049W6D020PT70
						PTFE - USP 121	049W6D020PT121
DN25	29,00	26,00	9,00	114,30	1.4404	PTFE - FDA	049W6D025PT70
						PTFE - USP 121	049W6D025PT121
DN32	35,00	32,00	11,50	139,70	1.4404	PTFE - FDA	049W6D032PT70
						PTFE - USP 121	049W6D032PT121
DN40	41,00	38,00	11,50	139,70	1.4404	PTFE - FDA	049W6D040PT70
						PTFE - USP 121	049W6D040PT121

Int. finishing: **Ra ≤ 0,4 µm**  
Ext. finishing: **Ra ≤ 0,8 µm Mirror Polished**

Max Working Conditions:  
**10 bar (120 psi) and 150°C (300°F)**

Gaskets:  
**FDA approved PTFE**  
**or USP CLASS VI - 121° PTFE**





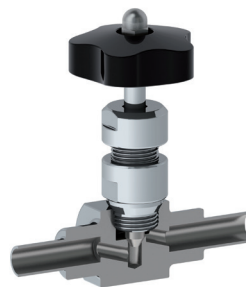
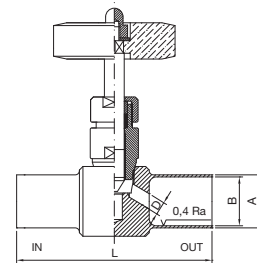
**ISO 1127 Butt Weld**

Size	Ø A	Ø B	Ø D	Ø L	Valve Material	Gasket Material	Code
DN8	13,50	10,30	5,50	101,60	1.4404	PTFE - FDA	049W6I008 <b>PT70</b>
						PTFE - USP 121	049W6I008 <b>PT121</b>
DN10	17,20	14,00	5,50	101,60	1.4404	PTFE - FDA	049W6I010 <b>PT70</b>
						PTFE - USP 121	049W6I010 <b>PT121</b>
DN15	21,30	18,10	7,00	87,00	1.4404	PTFE - FDA	049W6I015 <b>PT70</b>
						PTFE - USP 121	049W6I015 <b>PT121</b>
DN20	26,90	23,70	9,00	114,30	1.4404	PTFE - FDA	049W6I020 <b>PT70</b>
						PTFE - USP 121	049W6I020 <b>PT121</b>
DN25	33,70	29,70	9,00	114,30	1.4404	PTFE - FDA	049W6I025 <b>PT70</b>
						PTFE - USP 121	049W6I025 <b>PT121</b>
DN32	42,40	38,40	11,50	139,70	1.4404	PTFE - FDA	049W6I032 <b>PT70</b>
						PTFE - USP 121	049W6I032 <b>PT121</b>
DN40	48,30	44,30	11,50	139,70	1.4404	PTFE - FDA	049W6I040 <b>PT70</b>
						PTFE - USP 121	049W6I040 <b>PT121</b>

Int. finishing: **Ra ≤ 0,4 µm**  
Ext. finishing: **Ra ≤ 0,8 µm Mirror Polished**

Max Working Conditions:  
**10 bar (120 psi) and 150°C (300°F)**

Gaskets:  
**FDA approved PTFE**  
**or USP CLASS VI - 121° PTFE**



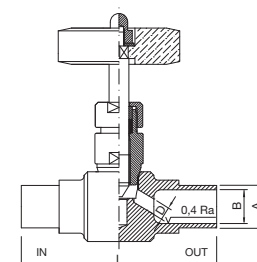
**Metric Pipe SP 1.0 mm Butt Weld**

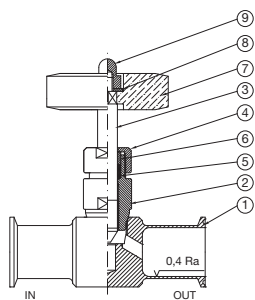
Size	Ø A	Ø B	Ø D	Ø L	Valve Material	Gasket Material	Code
DN4	6,00	4,00	4,00	101,60	1.4404	PTFE - FDA	049W6DN04 <b>PT70</b>
						PTFE - USP 121	049W6DN04 <b>PT121</b>
DN6	8,00	6,00	4,00	101,60	1.4404	PTFE - FDA	049W6DN06 <b>PT70</b>
						PTFE - USP 121	049W6DN06 <b>PT121</b>
DN8	10,00	8,00	4,00	101,60	1.4404	PTFE - FDA	049W6DN08 <b>PT70</b>
						PTFE - USP 121	049W6DN08 <b>PT121</b>
DN10	12,00	10,00	5,50	101,60	1.4404	PTFE - FDA	049W6DN10 <b>PT70</b>
						PTFE - USP 121	049W6DN10 <b>PT121</b>
DN12	14,00	12,00	5,50	101,60	1.4404	PTFE - FDA	049W6DN12 <b>PT70</b>
						PTFE - USP 121	049W6DN12 <b>PT121</b>

Int. finishing: **Ra ≤ 0,4 µm**  
Ext. finishing: **Ra ≤ 0,8 µm Mirror Polished**

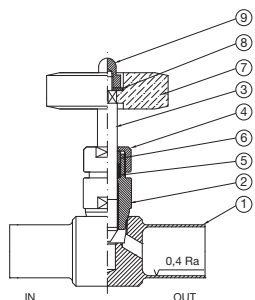
Max Working Conditions:  
**10 bar (120 psi) and 150°C (300°F)**

Gaskets:  
**FDA approved PTFE**  
**or USP CLASS VI - 121° PTFE**

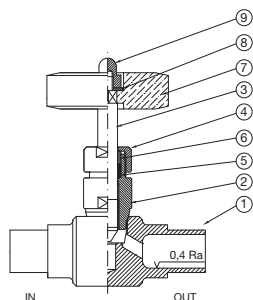




Tri-Clamp



Butt Weld



Metric Pipe SP 1.0 mm  
Butt Weld

N°	Name	Material
1	Body	AISI 316L
2	Rod Valve Guide	AISI 316L
3	Rod Working Valve	AISI 316L
4	Cap	AISI 316L
5	Gasket	PTFE *
6	Ring	AISI 316L
7	Handle	Bakelite
8	Washer	AISI 304
9	Nut	AISI 304

\* FDA approved as standard

N°	Description	ASTM A270 TC	ASTM A270 BW	DIN 32676 TC	DIN 32676 BW	ISO 1127 TC	ISO 1127 BW	Metric BW	Code
4	Cap n° 1 pcs							DN4	0496005004
								DN6	0496005004
								DN8	0496005004
						DN8	DN8	DN10	0496007504
				DN10	DN10	DN10	DN10	DN12	0496007504
		1/4"	1/4"						0496005004
		3/8"	3/8"						0496007504
		1/2"	1/2"						0496007504
		3/4"	3/4"	DN15	DN15	DN15	DN15		0496007504
		1"	1"	DN20	DN20	DN20	DN20		0496010004
5	PTFE - FDA Gasket n° 1 pcs							DN4	053X002505PT70
								DN6	053X002505PT70
								DN8	053X002505PT70
						DN8	DN8	DN10	053X003705PT70
				DN10	DN10	DN10	DN10	DN12	053X003705PT70
		1/4"	1/4"						053X002505PT70
		3/8"	3/8"						053X003705PT70
		1/2"	1/2"						053X003705PT70
		3/4"	3/4"	DN15	DN15	DN15	DN15		053X005005PT70
		1"	1"	DN20	DN20	DN20	DN20		053X007505PT70
5	PTFE - USP 121° Gasket n° 1 pcs							DN4	049X002505PT121
								DN6	049X002505PT121
								DN8	049X002505PT121
						DN8	DN8	DN10	049X003705PT121
				DN10	DN10	DN10	DN10	DN12	049X003705PT121
		1/4"	1/4"						049X002505PT121
		3/8"	3/8"						049X003705PT121
		1/2"	1/2"						049X005005PT121
		3/4"	3/4"	DN15	DN15	DN15	DN15		049X007505PT121
		1"	1"	DN20	DN20	DN20	DN20		049X010005PT121
1.1/2"	1.1/2"	DN25	DN25	DN25	DN25		049X015005PT121		
2"	2"	DN32	DN32	DN32	DN32		049X015005PT121		
2.1/2"	2.1/2"	DN40	DN40	DN40	DN40		049X025005PT121		

N°	Description	ASTM A270 TC	ASTM A270 BW	DIN 32676 TC	DIN 32676 BW	ISO 1127 TC	ISO 1127 BW	Metric BW	Code
6	Ring n° 1 pcs							DN4	0536002506
								DN6	0536002506
								DN8	0536002506
						DN8	DN8	DN10	0536003706
				DN10	DN10	DN10	DN10	DN12	0536003706
		1/4"	1/4"						0536002506
		3/8"	3/8"						0536003706
		1/2"	1/2"						0536003706
		3/4"	3/4"	DN15	DN15	DN15	DN15		0536005006
		1"	1"	DN20	DN20	DN20	DN20		0536007506
		1.1/2"	1.1/2"	DN25	DN25	DN25	DN25		0536010006
		2"	2"	DN32	DN32	DN32	DN32		0536010006
2.1/2"	2.1/2"	DN40	DN40	DN40	DN40		0536020006		
7	Handle n° 1 pcs							DN4	VZ.42-5X5
								DN6	VZ.42-5X5
								DN8	VZ.42-5X5
						DN8	DN8	DN10	VCR.192_50-6X6
				DN10	DN10	DN10	DN10	DN12	VCR.192_50-6X6
		1/4"	1/4"						VZ.42-5X5
		3/8"	3/8"						VCR.192_50-6X6
		1/2"	1/2"						VCR.192_50-6X6
		3/4"	3/4"	DN15	DN15	DN15	DN15		VCR.192_50-6X6
		1"	1"	DN20	DN20	DN20	DN20		VCR.192_60-8X8
		1.1/2"	1.1/2"	DN25	DN25	DN25	DN25		VCR.192_70-8X8
		2"	2"	DN32	DN32	DN32	DN32		VCR.192_70-8X8
2.1/2"	2.1/2"	DN40	DN40	DN40	DN40		VCR.192_100-10X10		
8	Washer n° 1 pcs							DN4	WA205.30-12.00-01.00
								DN6	WA205.30-12.00-01.00
								DN8	WA205.30-12.00-01.00
						DN8	DN8	DN10	WA206.50-11.70-01.50
				DN10	DN10	DN10	DN10	DN12	WA206.50-11.70-01.50
		1/4"	1/4"						WA205.30-12.00-01.00
		3/8"	3/8"						WA206.50-11.70-01.50
		1/2"	1/2"						WA206.50-11.70-01.50
		3/4"	3/4"	DN15	DN15	DN15	DN15		WA206.50-11.70-01.50
		1"	1"	DN20	DN20	DN20	DN20		WA208.50-15.70-01.50
		1.1/2"	1.1/2"	DN25	DN25	DN25	DN25		WA208.50-15.70-01.50
		2"	2"	DN32	DN32	DN32	DN32		WA208.50-15.70-01.50
2.1/2"	2.1/2"	DN40	DN40	DN40	DN40		WA208.50-15.70-01.50		
9	Nut n° 1 pcs							DN4	BN-A2-M05
								DN6	BN-A2-M05
								DN8	BN-A2-M05
						DN8	DN8	DN10	BN-A2-M06
				DN10	DN10	DN10	DN10	DN12	BN-A2-M06
		1/4"	1/4"						BN-A2-M05
		3/8"	3/8"						BN-A2-M06
		1/2"	1/2"						BN-A2-M06
		3/4"	3/4"	DN15	DN15	DN15	DN15		BN-A2-M06
		1"	1"	DN20	DN20	DN20	DN20		BN-A2-M08
		1.1/2"	1.1/2"	DN25	DN25	DN25	DN25		BN-A2-M08
		2"	2"	DN32	DN32	DN32	DN32		BN-A2-M08
2.1/2"	2.1/2"	DN40	DN40	DN40	DN40		BN-A2-M08		



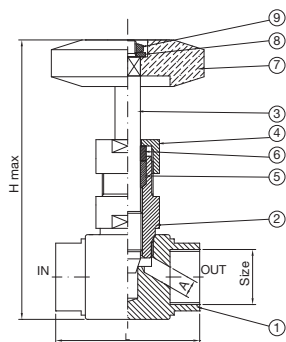
**Female Gas Threaded BSPP**

Size	Ø A	H	L	Valve Material	Gasket Material	Code
1/4"	4,00	78,00	45,00	1.4404	PTFE - FDA	<b>053Z60025PT70</b>
3/8"	5,50	92,00	52,00	1.4404	PTFE - FDA	<b>053Z60037PT70</b>
1/2"	7,00	106,00	61,00	1.4404	PTFE - FDA	<b>053Z60050PT70</b>
3/4"	9,00	119,00	68,00	1.4404	PTFE - FDA	<b>053Z60075PT70</b>
1"	11,50	135,00	86,00	1.4404	PTFE - FDA	<b>053Z60100PT70</b>
1.1/2"	17,00	150,00	120,00	1.4404	PTFE - FDA	<b>053Z60150PT70</b>
2"	27,50	224,00	224,00	1.4404	PTFE - FDA	<b>053Z60200PT70</b>

Int. finishing: **Ra ≤ 1,6 µm**  
Ext. finishing: **Ra ≤ 1,6 µm**

Max Working Conditions:  
**60 bar and (870 psi) and 150°C (300°F)**

**Spare Parts**



N°	Name	Material
1	Body	AISI 316L
2	Rod Valve Guide	AISI 316L
3	Rod Working Valve	AISI 316L
4	Cap	AISI 316L
5	Gasket	PTFE
6	Ring	AISI 316L
7	Handle	Bakelite
8	Washer	AISI 304
9	Nut	AISI 304

N°	Description	Valve size	Code
4	Cap n° 1 pcs	1/4"	<b>0536002504</b>
		3/8"	<b>0536003704</b>
		1/2"	<b>0536005004</b>
		3/4"	<b>0536007504</b>
		1"	<b>0536010004</b>
		1.1/2"	<b>0536010004</b>
		2"	<b>0536020004</b>
5	PTFE - FDA Gasket n° 1 pcs	1/4"	<b>053X002505PT70</b>
		3/8"	<b>053X003705PT70</b>
		1/2"	<b>053X005005PT70</b>
		3/4"	<b>053X007505PT70</b>
		1"	<b>053X010005PT70</b>
		1.1/2"	<b>053X010005PT70</b>
		2"	<b>053X020005PT70</b>
6	Ring n° 1 pcs	1/4"	<b>0536002506</b>
		3/8"	<b>0536003706</b>
		1/2"	<b>0536005006</b>
		3/4"	<b>0536007506</b>
		1"	<b>0536010006</b>
		1.1/2"	<b>0536010006</b>
		2"	<b>0536020006</b>

N°	Description	Valve size	Code
7	Handle n° 1 pcs	1/4"	<b>VZ.42-5X5</b>
		3/8"	<b>VCR.192_50-6X6</b>
		1/2"	<b>VCR.192_50-6X6</b>
		3/4"	<b>VCR.192_60-8X8</b>
		1"	<b>VCR.192_70-8X8</b>
		1.1/2"	<b>VCR.192_70-8X8</b>
		2"	<b>VCR.192_100-10X10</b>
8	Washer n° 1 pcs	1/4"	-
		3/8"	-
		1/2"	-
		3/4"	<b>WA208.50-15.70-01.50</b>
		1"	<b>WA208.50-15.70-01.50</b>
		1.1/2"	<b>WA208.50-15.70-01.50</b>
		2"	<b>WA208.50-15.70-01.50</b>
9	Nut n° 1 pcs	1/4"	<b>N-A2-M05-H040</b>
		3/8"	<b>N-A2-M06-H050</b>
		1/2"	<b>N-A2-M06-H050</b>
		3/4"	<b>N-A2-M08-H065</b>
		1"	<b>N-A2-M08-H065</b>
		1.1/2"	<b>N-A2-M08-H065</b>
		2"	<b>N-A2-M08-H065</b>





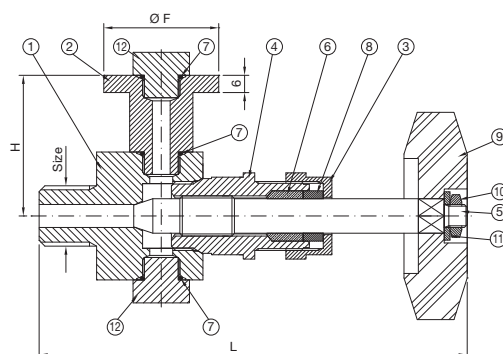
## Male Gas Threaded BSPP

Size	L	H	Ø F	Valve Material	Gasket Material	Code
3/8"	144,00	48,00	40,00	1.4404	PTFE - FDA + FPM/FKM	054Z60037PT70
1/2"	144,00	48,00	40,00	1.4404	PTFE - FDA + FPM/FKM	054Z60050PT70

Int. finishing:  $Ra \leq 1,6 \mu m$   
 Ext. finishing:  $Ra \leq 1,6 \mu m$

Max Working Conditions:  
**10 bar (120 psi) and 150°C (300°F)**

## Spare Parts



N°	Name	Material
1	Body	AISI 316L
2	Flange	AISI 316L
3	Cap	AISI 316L
4	Rod Valve Guide	AISI 316L
5	Rod Working Valve	AISI 316L
6	Piston Gasket	PTFE
7	O-Ring 3043	FPM/FKM
8	Stainless-steel Ring	AISI 316L
9	Handle	BAKELITE
10	M6 Nut	AISI 304
11	M6 Washer	AISI 304
12	1/4" Hexagonal Cap	AISI 316L

N°	Description	Valve size	Code
2	Flange - n° 1 pcs	all sizes	0546000002
3	Cap - n° 1 pcs	all sizes	0536005004
6	Piston Gasket - PTFE - FDA - n° 1 pcs	all sizes	053X005005PT70
7	O-Ring 3043 FPM/FKM - n° 5 pcs	all sizes	0546X000007V
8	Ring - n° 1 pcs	all sizes	0536005006
9	Handle - n° 1 pcs	all sizes	VCR.192_50-6X6
10	Nut - n° 1 pcs	all sizes	N-A2-M06
11	Washer - n° 1 pcs	all sizes	WA206.50-11.70-01.50
12	Hexagonal Nut - n° 1 pcs	all sizes	0546000012