



ART. 023/A

ART. 023/C

ART. 023/A 1 Hose Barb Outlet

ASTM A270 Tri-Clamp - Flange design according to ASME-BPE

Size	Ø B	L	Valve Material	O-Ring Material	Code
1/2"	6,00	38,00	1.4404	FPM/FKM	023A60050V
				EPDM	023A60050EP
				SILICONE FDA	023A60050SIF
3/4"	6,00	38,00	1.4404	FPM/FKM	023A60075V
				EPDM	023A60075EP
				SILICONE FDA	023A60075SIF

Int. finishing: $Ra \leq 1,2 \mu m$
Ext. finishing: $Ra \leq 1,6 \mu m$ mirror polished

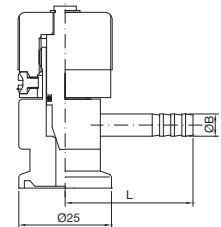
Max Working Conditions:
6 bar (87 psi) and 150°C (300°F)

Installation:
Horizontal installation recommended

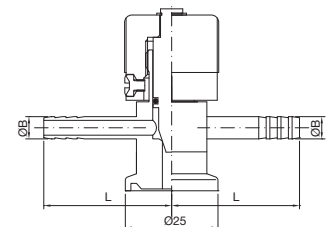
ART. 023/C 1 Hose Barb Outlet + 1 CIP Hose Barb Inlet

ASTM A270 Tri-Clamp - Flange design according to ASME-BPE

Size	Ø B	L	Valve Material	O-Ring Material	Code
1/2"	6,00	38,00	1.4404	FPM/FKM	023C60050V
				EPDM	023C60050EP
				SILICONE FDA	023C60050SIF
3/4"	6,00	38,00	1.4404	FPM/FKM	023C60075V
				EPDM	023C60075EP
				SILICONE FDA	023C60075SIF

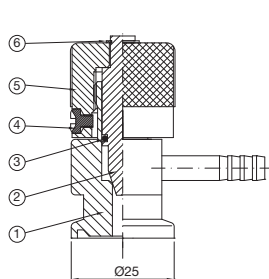


ART. 023/A

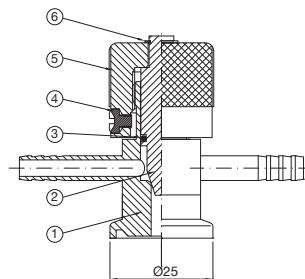


ART. 023/C

Spare parts



ART. 023/A



ART. 023/C

N°	Name	Material
1	Body	AISI 316L
2	Piston	AISI 316L
3	O-Ring 2025	FPM/FKM or EPDM or SILICONE FDA
4	M3 Screw	AISI 304
5	Handle	AISI 316L
6	Seeger	AISI 304

N°	Description	Valve size	Code
2	Piston - n° 1 pcs	all sizes	AAAA0381
3	O-Ring Kit 2025 FPM/FKM - n° 5 pcs	all sizes	ORNSV05V
3	O-Ring Kit 2025 EPDM - n° 5 pcs	all sizes	ORNSV05EP
3	O-Ring Kit 2025 SILICONE FDA - n° 5 pcs	all sizes	ORNSV05SIF
5	Handle - n° 1 pcs	all sizes	AAAA0380
6	Seeger - n° 10 pcs	all sizes	SEEGERSV



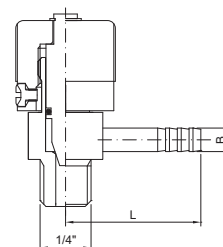
Male Gas Threaded

Size	Ø B	L	Valve Material	O-Ring Material	Code
1/4"	6,00	38,00	1.4404	FPM/FKM	022Z60025V
				EPDM	022Z60025EP
				SILICONE FDA	022Z60025SIF

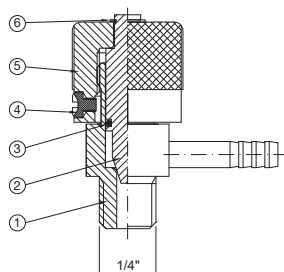
Int. finishing: $Ra \leq 1,2 \mu m$
 Ext. finishing: $Ra \leq 1,6 \mu m$ mirror polished

Max Working Conditions:
6 bar (87 psi) and 150°C (300°F)

Installation:
Horizontal installation recommended



Spare parts



N°	Name	Material
1	Body	AISI 316L
2	Piston	AISI 316L
3	O-Ring 2025	FPM/FKM or EPDM or SILICONE FDA
4	M3 Screw	AISI 304
5	Handle	AISI 316L
6	Seeger	AISI 304

N°	Description	Valve size	Code
2	Piston - n° 1 pcs	all sizes	AAAA0381
3	O-Ring Kit 2025 FPM/FKM - n° 5 pcs	all sizes	ORNSV05V
3	O-Ring Kit 2025 EPDM - n° 5 pcs	all sizes	ORNSV05EP
3	O-Ring Kit 2025 SILICONE FDA - n° 5 pcs	all sizes	ORNSV05SIF
5	Handle - n° 1 pcs	all sizes	AAAA0380
6	Seeger - n° 10 pcs	all sizes	SEEGERSV



ASTM A270 Tri-Clamp - Flange design according to ASME-BPE

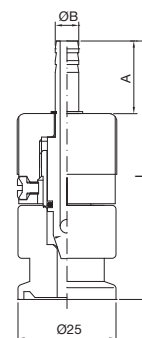
Size	A	Ø B	L	Valve Material	O-Ring Material	Code
1/2"	17,00	6,00	66,00	1.4404	FPM/FKM	041Z60050V
					EPDM	041Z60050EP
					SILICONE FDA	041Z60050SIF
3/4"	17,00	6,00	66,00	1.4404	FPM/FKM	041Z60075V
					EPDM	041Z60075EP
					SILICONE FDA	041Z60075SIF

Int. finishing: $Ra \leq 1,2 \mu m$ Ext. finishing: $Ra \leq 1,6 \mu m$ mirror polished

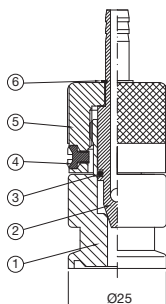
Max Working Conditions:

6 bar (87 psi) and 150°C (300°F)

Installation:

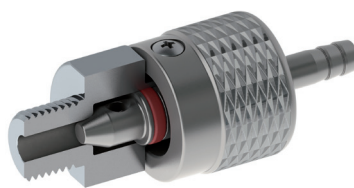
Vertical installation recommended

Spare parts



N°	Name	Material
1	Body	AISI 316L
2	Piston	AISI 316L
3	O-Ring 2025	FPM/FKM or EPDM or SILICONE FDA
4	M3 Screw	AISI 304
5	Handle	AISI 316L
6	Seeger	AISI 304

N°	Description	Valve size	Code
2	Piston - n° 1 pcs	all sizes	AAAA0382
3	O-Ring Kit 2025 FPM/FKM - n° 5 pcs	all sizes	ORNSV05V
3	O-Ring Kit 2025 EPDM - n° 5 pcs	all sizes	ORNSV05EP
3	O-Ring Kit 2025 SILICONE FDA - n° 5 pcs	all sizes	ORNSV05SIF
5	Handle - n° 1 pcs	all sizes	AAAA0380
6	Seeger - n° 10 pcs	all sizes	SEEGERSV



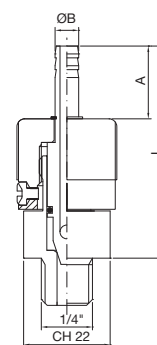
Male Gas Threaded

Size	A	Ø B	L	Valve Material	O-Ring Material	Code
1/4"	17,00	6,00	54,00	1.4404	FPM/FKM	033Z60025V
					EPDM	033Z60025EP
					SILICONE FDA	033Z60025SIF

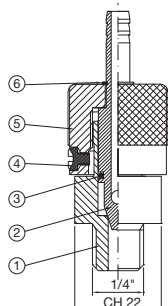
Int. finishing: **Ra ≤ 1,2 µm**
Ext. finishing: **Ra ≤ 1,6 µm mirror polished**

Max Working Conditions:
6 bar (87 psi) and 150°C (300°F)

Installation:
Vertical installation recommended



Spare parts



N°	Name	Material
1	Body	AISI 316L
2	Piston	AISI 316L
3	O-Ring 2025	FPM/FKM or EPDM or SILICONE FDA
4	M3 Screw	AISI 304
5	Handle	AISI 316L
6	Seeger	AISI 304

N°	Description	Valve size	Code
2	Piston - n° 1 pcs	all sizes	AAAA0382
3	O-Ring Kit 2025 FPM/FKM - n° 5 pcs	all sizes	ORNSV05V
3	O-Ring Kit 2025 EPDM - n° 5 pcs	all sizes	ORNSV05EP
3	O-Ring Kit 2025 SILICONE FDA - n° 5 pcs	all sizes	ORNSV05SIF
5	Handle - n° 1 pcs	all sizes	AAAA0380
6	Seeger - n° 10 pcs	all sizes	SEEGERSV



ART. 344/A

ART. 344/C

ART. 344/A 1 Hose Barb Outlet

Ø A	L	Valve Material	O-Ring Material	Code
3/8"	61,50	1.4404	FPM/FKM	344A6BSPP37V
			EPDM	344A6BSPP37EP
			SILICONE FDA	344A6BSPP37SIF
			SILICONE USP 121	344A6BSPP37SI121

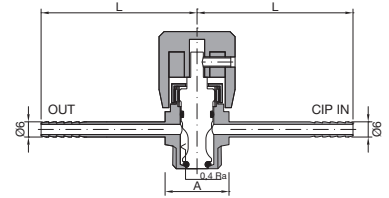
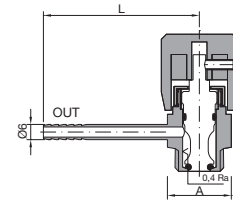
Int. finishing: $Ra \leq 0,4 \mu m$
 Ext. finishing: $Ra \leq 0,8 \mu m$ mirror polished

Max Working Conditions:
12 bar (170 psi) and 150°C (300°F)

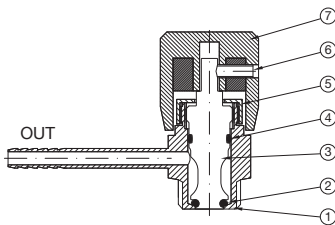
Installation:
Horizontal installation recommended

ART. 344/C 1 Hose Barb Outlet + 1 CIP Hose Barb Inlet

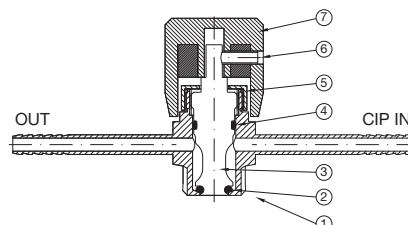
Ø A	L	Valve Material	O-Ring Material	Code
3/8"	61,50	1.4404	FPM/FKM	344C6BSPP37V
			EPDM	344C6BSPP37EP
			SILICONE FDA	344C6BSPP37SIF
			SILICONE USP 121	344C6BSPP37SI121



Spare parts



ART. 344/A



ART. 344/C

N°	Name	Material
1	Body	AISI 316L
2	O-Ring 3021	FPM/FKM or EPDM or SILICONE FDA or SILICONE USP 121
3	Piston	AISI 316L
4	O-Ring 2037	FPM/FKM or EPDM or SILICONE FDA or SILICONE USP 121
5	Ring	AISI 316L
6	Grub Screw M4	AISI 304
7	Handle	PTFE + INOX

N°	Description	Valve size	Code
2+4	O-Ring Kit 3021 / 2037 FPM/FKM - n° 10 + 10 pcs	all sizes	ORSV1010V
2+4	O-Ring Kit 3021 / 2037 EPDM - n° 10 + 10 pcs	all sizes	ORSV1010EP
2+4	O-Ring Kit 3021 / 2037 SILICONE FDA - n° 10 + 10 pcs	all sizes	ORSV1010SIF
2+4	O-Ring Kit 3021 / 2037 SILICONE USP 121° - n° 10 + 10 pcs	all sizes	ORSV1010SI121
5	Ring - n° 1 pcs	all sizes	AAAA0090
6	Grub Screw M4 Kit - n° 10 pcs	all sizes	ORSVM4X10
7	Handle PTFE + INOX - n° 1 pcs	all sizes	ORSVHA1



ART. 390/A

ART. 390/C

ART. 390/A 1 Hose Barb Outlet

Ø A	L	Valve Material	O-Ring Material	Code
3/8"	61,50	1.4404	FPM/FKM	390A6BSPP37V
			EPDM	390A6BSPP37EP
			SILICONE FDA	390A6BSPP37SIF
			SILICONE USP 121	390A6BSPP37Si121

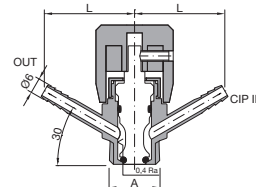
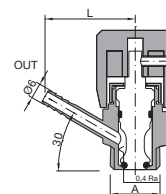
Int. finishing: **Ra ≤ 0,4 µm**
Ext. finishing: **Ra ≤ 0,8 µm mirror polished**

Max Working Conditions:
12 bar (170 psi) and 150°C (300°F)

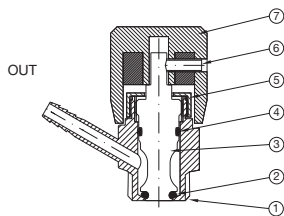
Installation:
Horizontal installation recommended

ART. 390/C 1 Hose Barb Outlet + 1 CIP Hose Barb Inlet

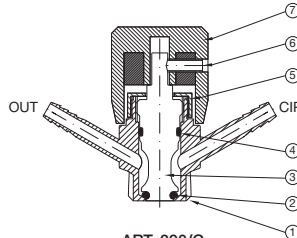
Ø A	L	Valve Material	O-Ring Material	Code
3/8"	61,50	1.4404	FPM/FKM	390C6BSPP37V
			EPDM	390C6BSPP37EP
			SILICONE FDA	390C6BSPP37SIF
			SILICONE USP 121	390C6BSPP37Si121



Spare parts



ART. 390/A



ART. 390/C

N°	Name	Material
1	Body	AISI 316L
2	O-Ring 3021	FPM/FKM or EPDM or SILICONE FDA or SILICONE USP 121
3	Piston	AISI 316L
4	O-Ring 2037	FPM/FKM or EPDM or SILICONE FDA or SILICONE USP 121
5	Ring	AISI 316L
6	Grub Screw M4	AISI 304
7	Handle	PTFE + INOX

N°	Description	Valve size	Code
2+4	O-Ring Kit 3021 / 2037 FPM/FKM - n° 10 + 10 pcs	all sizes	ORSV1010V
2+4	O-Ring Kit 3021 / 2037 EPDM - n° 10 + 10 pcs	all sizes	ORSV1010EP
2+4	O-Ring Kit 3021 / 2037 SILICONE FDA - n° 10 + 10 pcs	all sizes	ORSV1010SIF
2+4	O-Ring Kit 3021 / 2037 SILICONE USP 121° - n° 10 + 10 pcs	all sizes	ORSV1010Si121
5	Ring - n° 1 pcs	all sizes	AAAA0090
6	Grub Screw M4 Kit - n° 10 pcs	all sizes	ORSVM4X10
7	Handle PTFE + INOX - n° 1 pcs	all sizes	ORSVHA1