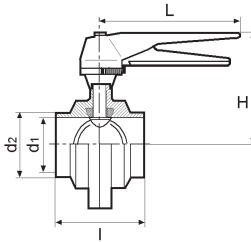


4000 S/S

Vanne papillon à souder inox poli | Vlinderklep

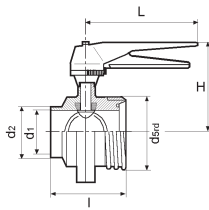


Inox 304L Poli/Gepolijst
Inox 316L Poli/Gepolijst

NW/DN	10	15	20	25	32	40	50	65	80	100	125	150
d1				26	32	38	50	66	81	100	125	150
d2				28,5	34,5	40,5	53	70,5	85,5	104,5	132	157
I				40	42	50	50	50	60	64	110	132
H				90	93	95	100	110	122	132	135	175
L				150	150	150	150	150	150	150	270	300

4010 G/S

Vanne papillon inox poli | Vlinderklep

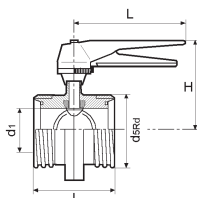


Inox 304L Poli/Gepolijst
Inox 316L Poli/Gepolijst

NW/DN	10	15	20	25	32	40	50	65	80	100	125	150
d1				26	32	38	50	66	81	100	125	150
d2				28,5	34,5	40,5	53	70,5	85,5	104,5	132	157
d5Rd				52x1/6	58x1/6	65x1/6	78x1/6	95x1/6	110x1/4	130x1/4	160x1/4	190x1/4
I				52	53	61	61	63	80	84	110	132
H				90	93	95	100	110	117	128	147	180
L				150	150	150	150	150	150	150	270	300

4011 G/G

Vanne papillon inox poli | Vlinderklep

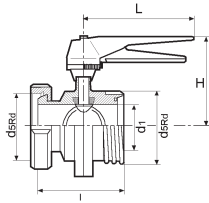


Inox 304L Poli/Gepolijst
Inox 316L Poli/Gepolijst

NW/DN	10	15	20	25	32	40	50	65	80	100	125	150
d1				26	32	38	50	66	81	100	125	150
d5Rd				52x1/6	58x1/6	65x1/6	78x1/6	95x1/6	110x1/4	130x1/4	160x1/4	190x1/4
I				64	64	72	72	76	100	104	110	132
H				90	93	95	100	110	117	128	147	180
L				150	150	150	150	150	150	150	270	300

4013 G/KM

Vanne papillon inox poli | Vlinderklep



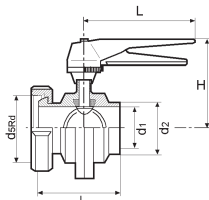
Inox 304L Poli/Gepolijst
Inox 316L Poli/Gepolijst



NW/DN	10	15	20	25	32	40	50	65	80	100	125	150
d1				26	32	38	50	66	81	100	125	150
d5Rd				52x1/6	58x1/6	65x1/6	78x1/6	95x1/6	110x1/4	130x1/4	160x1/4	190x1/4
I				74	78	87	89	95	117	128	144	169
H				90	93	95	100	110	117	128	147	180
L				150	150	150	150	150	150	150	270	300

4030 S/KM

Vanne papillon inox poli | Vlinderklep



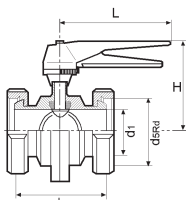
Inox 304L Poli/Gepolijst
Inox 316L Poli/Gepolijst



NW/DN	10	15	20	25	32	40	50	65	80	100	125	150
d1				26	32	38	50	66	81	100	125	150
d2				28,5	34,5	40,5	53	70,5	85,5	104,5	132	157
d5Rd				52x1/6	58x1/6	65x1/6	78x1/6	95x1/6	110x1/4	130x1/4	160x1/4	190x1/4
I				74	78	87	89	95	117	128	144	169
H				90	93	95	100	110	117	128	147	180
L				150	150	150	150	150	150	150	270	300

4033 KM/KM

Vanne papillon inox poli | Vlinderklep



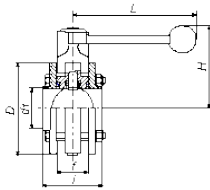
Inox 304L Poli/Gepolijst
Inox 316L Poli/Gepolijst



NW/DN	10	15	20	25	32	40	50	65	80	100	125	150
d1				26	32	38	50	66	81	100	125	150
d5Rd				52x1/6	58x1/6	65x1/6	78x1/6	95x1/6	110x1/4	130x1/4	160x1/4	190x1/4
I				84	92	102	106	114	134	152	178	202
H				90	93	95	100	110	117	128	147	180
L				150	150	150	150	150	150	150	270	300

4900 S/S

Vanne papillon sandwich inox poli | Vlinderklep



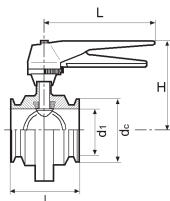
Inox 304L Poli/Gepolijst
Inox 316L Poli/Gepolijst



NW/DN	10	15	20	25	32	40	50	65	80	100	125	150
d1				26	32	38	50	66	81	100	125	150
D				93	98	103	115	132	145	165	191	240
f				40	40	40	40	40	40	40	70	90
I				68	68	68	72	72	80	80	120	140
H				90	93	95	100	110	117	128	147	180
L				150	150	150	150	150	180	180	270	300

42000 C/C

Vanne papillon inox poli | Vlinderklep



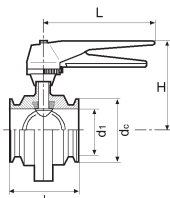
Inox 316L Poli/Gepolijst



NW/DN	10	15	20	25	32	40	50	65	80	100	125	150
d1				26	32	38	50	66	81	100		
dc				50,5	50,5	50,5	64	91	106	119		
I				64	68	72	72	76	88	92		
H				89	91	94	100	109	116	127		
L				122	122	122	122	150	150	150		

42900 C/C

Vanne papillon inox poli | Vlinderklep



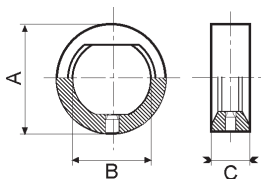
Inox 316L Poli/Gepolijst



NW/DN	1"	1" 1/2	2"	2" 1/2	3"	4"
d1	22,1	34,9	47,6	60,3	72,9	97,4
dc	50,5	50,5	64	77,5	91	119
I	64	72	72	76	76	104
H	90	95	100	102	110	128
L	150	150	150	150	150	150

4040 SIL

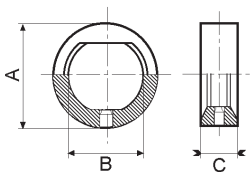
Joint en SILICONE rouge | Dichting uit Roode SILICON



NW/DN	25-1"	32	40-1"1/2	50-2"	2"1/2	65	3"	80	100-4"
A	40	48	54	66	80	84	91,5	100	115
B	26	32	38	50	60,5	66	72	81	100
C	20	20	21	21	22	22	24	24	26,5

4041 VIT

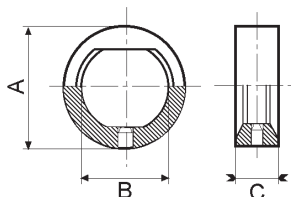
Joint en VITON noir | Dichting uit zwarte VITON



NW/DN	25-1"	32	40-1"1/2	50-2"	2"1/2	65	3"	80	100-4"
A	40	48	54	66	80	84	91,5	100	115
B	26	32	38	50	60,5	66	72	81	100
C	20	20	21	21	22	22	24	24	26,5

4042 EP

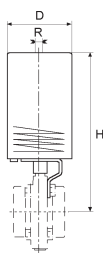
Joint en EPDM noir | Dichting uit zwarte EPDM



NW/DN	25-1"	32	40-1"1/2	50-2"	2"1/2	65	3"	80	100-4"
A	40	48	54	66	80	84	91,5	100	115
B	26	32	38	50	60,5	66	72	81	100
C	20	20	21	21	22	22	24	24	26,5

4300 SE

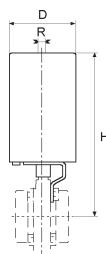
Commande pneumatique Simple Effet | Pneum. bediening Enkel Werk



NW/DN	10	15	20	25	32	40	50	65	80	100	125	150
D				90	90	90	90	90	90	90		
H				233	236	238	245	253	261	271		
R				1/8"	1/8"	1/8"	1/8"	1/8"	1/8"	1/8"		

4400 DE

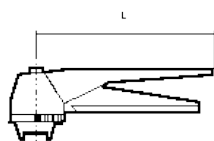
Commande pneumatique Double Effet | Pneum. bediening Dubbel Werk



NW/DN	10	15	20	25	32	40	50	65	80	100	125	150
D				90	90	90	90	90	90	90		
H				233	236	238	245	253	261	271		
R				1/8"	1/8"	1/8"	1/8"	1/8"	1/8"	1/8"		

4810

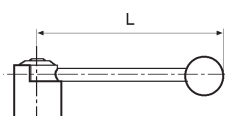
Levier "ABS" Multiposition | Handvaat



NW/DN	10	15	20	25	32	40	50	65	80	100	125	150
L				150	150	150	150	150	150	150		

4510

Levier à boule | Bol Handvaat



NW/DN	10	15	20	25	32	40	50	65	80	100	125	150
L				150	150	150	150	150	180	180		