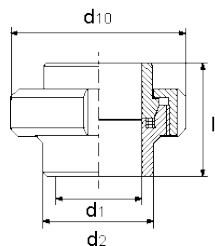
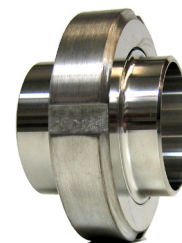


1015 S/S

Raccord union complet à souder | Laskoppelin inox gepolijst



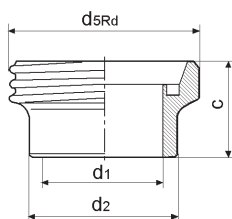
Inox 304L Poli/Gepolijst
Inox 316L Poli/Gepolijst



NW/DN	10	15	20	25	32	40	50	65	80	100	125	150
d1	10	16	20	26	32	38	50	66	81	100	125	150
d2	13	19	23	29	35	41	53	70	85	104	129	154
d10	38	44	54	63	70	78	92	112	127	148	178	210
l	34	34	36	45	51	53	57	65	75	89	70	76

1011 G/S

Nez fileté à souder inox poli | Lasdraadstuk inox gepolijst



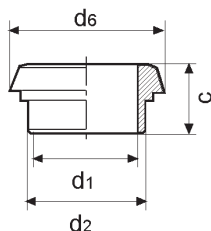
Inox 304L Poli/Gepolijst
Inox 316L Poli/Gepolijst



NW/DN	10	15	20	25	32	40	50	65	80	100	125	150
d1	10	16	20	26	32	38	50	66	81	100	125	150
d2	13	19	23	29	35	41	53	70	85	104	129	154
d5rd	28x1/8"	34x1/8"	44x1/6"	52x1/6"	58x1/6"	65x1/6"	78x1/6"	95x1/6"	110x1/4"	130x1/4"	160x1/4"	190x1/4"
c	21	21	24	29	32	33	35	40	45	54	46	50
f	4	4	6	7	7	7	7	8	8	10	12	13

1012 K/S

Nez conique à souder inox poli | Laskegelstuk inox gepolijst



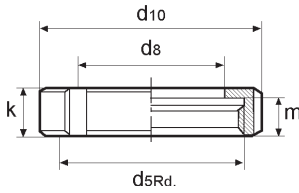
Inox 304L Poli/Gepolijst
Inox 316L Poli/Gepolijst



NW/DN	10	15	20	25	32	40	50	65	80	100	125	150
d1	10	16	20	26	32	38	50	66	81	100	125	150
d2	13	19	23	29	35	41	53	70	85	104	129	154
d6	22,5	28,5	36,5	44	50	56	68,5	86	100	121	150	176
h	17	17	18	22	25	26	28	32	37	44	34	37

1003 M

Ecrou | Moer



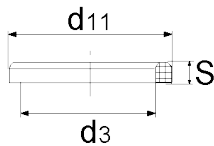
Inox 304L Poli/Gepolijst

Inox 316L Poli/Gepolijst - Sur demande/Op aanvraag

NW/DN	10	15	20	25	32	40	50	65	80	100	125	150
d8	19	25	31	36	42	49	62	80	94	115	138	164
d10	38	44	54	63	70	78	92	112	127	148	178	210
d5rd	28x1/8"	34x1/8"	44x1/6"	52x1/6"	58x1/6"	65x1/6"	78x1/6"	95x1/6"	110x1/4"	130x1/4"	160x1/4"	190x1/4"
k	18	18	20	21	21	21	22	25	29	31	35	40
m	15	15	17	18	18	18	19	21	25	26	30	34

Joint de raccord | Koppeling dichtingen

Disponibles dans les qualités suivantes :



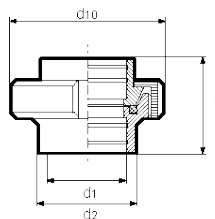
- 1004 S | Silicone
- 1006 V | Viton
- 1007 P | Perbunan
- 1008 E | EPDM
- 1009 T | PTFE



NW/DN	10	15	20	25	32	40	50	65	80	100	125	150
d3	12	18	23	30	36	42	54	71	85	104	130	155
d11	20	26	33	40	46	52	64	81	95	114	142	167
s	4,5	4,5	4,5	5	5	5	5	5	5	6	7	7

1005 W/W

Raccord union complet à mandriner | Walskoppeling



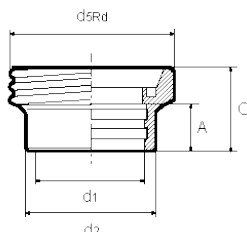
Inox 304L Poli/Gepolijst
Inox 316L Poli/Gepolijst



NW/DN	10	15	20	25	32	40	50	65	80	100	125	150
d1	12,2	18,2	22,2	28,2	34,2	40,2	52,2	70,3	85,3	104,3	129,4	154,4
d2	18	24	30	35	41	48	61	79	93	114	137	163
d10	38	44	54	63	70	78	92	112	127	148	178	210
I	34	34	36	45	51	53	57	65	75	89	70	76

1001 G/W

Nez fileté à mandriner | Walsdraadstuk



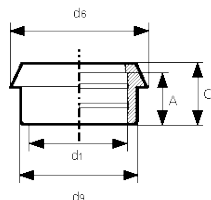
Inox 304L Poli/Gepolijst
Inox 316L Poli/Gepolijst



NW/DN	10	15	20	25	32	40	50	65	80	100	125	150
d1	12,2	18,2	22,2	28,2	34,2	40,2	52,2	70,3	85,3	104,3	129,4	154,4
d2	18	24	30	35	41	48	61	79	93	114	137	163
d5rd	28x1/8"	34x1/8"	44x1/6"	52x1/6"	58x1/6"	65x1/6"	78x1/6"	95x1/6"	110x1/4"	130x1/4"	160x1/4"	190x1/4"
A	12	12	12	15	18	20	22	25	28	35	10	12
C	21	21	24	29	32	33	35	40	45	54	46	50

1002 K/W

Nez conique à mandriner | Walskegelstuk



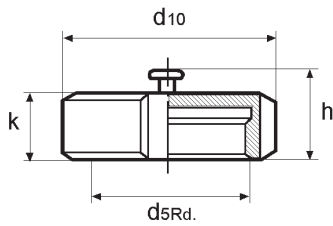
Inox 304L Poli/Gepolijst
Inox 316L Poli/Gepolijst



NW/DN	10	15	20	25	32	40	50	65	80	100	125	150
d1	12,2	18,2	22,2	28,2	34,2	40,2	52,2	70,3	85,3	104	129,4	154,4
d2	18	24	30	35	41	48	61	79	93	114	137	163
d6	22,5	28,5	36,5	44	50	56	68,5	86	100	121	150	176
A	12	12	12	15	18	20	22	25	28	35	10	12
C	17	17	18	22	25	26	28	32	37	44	34	37

1024 M

Bouchon avec bouton inox poli | Blinde Moer met knopf



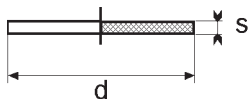
Inox 304L Poli/Gepolijst



NW/DN	10	15	20	25	32	40	50	65	80	100	125	150
d10	38	44	54	63	70	78	92	112	127	148	178	210
d5rd	28x1/8"	34x1/8"	44x1/6"	52x1/6"	58x1/6"	65x1/6"	78x1/6"	95x1/6"	110x1/4"	130x1/4"	160x1/4"	190x1/4"
k	18	18	20	21	21	21	22	25	29	31	35	40
h	25	25	27	28	28	28	29	32	36	38	42	-

Joint plat pour Bouchon | Dichtplaat voor blinde moer

Disponibles dans les qualités suivantes :



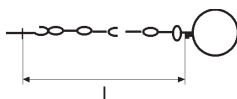
- 1026 | Silicone
- 1028 | Viton
- 1029 | Perbunan
- 1030 | EPDM



NW/DN	10	15	20	25	32	40	50	65	80	100	125	150
d	28	34	44	52	58	65	78	95	110	130	160	190
s	3	3	3	3	3	3	3	3	3	3	3	3

1027

Chaînette pour Bouchon | Knetting voor Blinde Moer



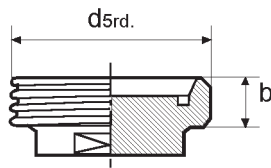
Inox Poli/Gepolijst



NW/DN	10	15	20	25	32	40	50	65	80	100	125	150
l	150	150	150	150	150	150	150	150	150	150	200	200

1031 G

Bouchon fileté inox poli | Blinddraadstuk



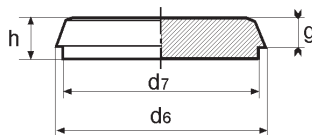
Inox 304L Poli/Gepolijst
Inox 316L Poli/Gepolijst



NW/DN	10	15	20	25	32	40	50	65	80	100	125	150
d5rd	28x1/8"	34x1/8"	44x1/6"	52x1/6"	58x1/6"	65x1/6"	78x1/6"	95x1/6"	110x1/4"	130x1/4"	160x1/4"	190x1/4"
b	21	21	24	24	24	24	24	28	30	30		

1032 K

Bouchon cône inox poli | Blindkegelstuk



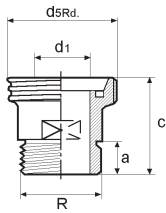
Inox 304L Poli/Gepolijst
Inox 316L Poli/Gepolijst



NW/DN	10	15	20	25	32	40	50	65	80	100	125	150
d6	22	28	36	44	50	56	68	86	100	121	150	176
d7	18	24	30	35	41	48	61	79	93	114	137	163
g	6	6	8	10	10	10	11	12	12	15	17	18
h	9	9	11	13	13	13	14	16	16	20	22	24

1801 G/Ra

Pièce d'adaptation DIN/GAZ | Aanpassingstuk DIN/Gaz

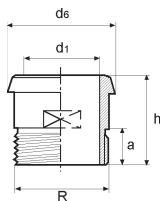


Inox 304L Poli/Gepolijst
Inox 316L Poli/Gepolijst

NW/DN	10	15	20	25	32	40	50	65	80	100
d1	10	16	20	26	32	38	50	66	81	100
d5Rd	28x1/8"	34x1/8"	44x1/6"	52x1/6"	58x1/6"	65x1/6"	78x1/6"	95x1/6"	110x1/4"	130x1/4"
R	3/8"	1/2"	3/4"	1"	1"1/4	1"1/2	2"	2"1/2	3"	4"
a	12	15	15	20	20	20	22	22	25	30
c	36	39	43	48	48	50	52	54	65	70

1802 K/Ra

Pièce d'adaptation DIN/GAZ | Aanpassingstuk DIN/Gaz

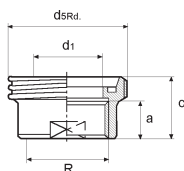


Inox 304L Poli/Gepolijst
Inox 316L Poli/Gepolijst

NW/DN	10	15	20	25	32	40	50	65	80	100
d1	10	16	20	26	32	38	50	66	81	100
d6	22	28	36	44	50	56	68	86	100	121
R	3/8"	1/2"	3/4"	1"	1"1/4	1"1/2	2"	2"1/2	3"	4"
a	12	15	15	20	20	20	22	22	25	30
h	33	36	40	50	50	50	51	55	61	70

1811 G/Ri

Pièce d'adaptation DIN/GAZ | Aanpassingstuk DIN/Gaz

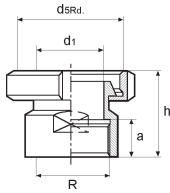


Inox 304L Poli/Gepolijst
Inox 316L Poli/Gepolijst

NW/DN	10	15	20	25	32	40	50	65	80	100
d1	10	16	20	26	32	38	50	66	81	100
d5Rd	28x1/8"	34x1/8"	44x1/6"	52x1/6"	58x1/6"	65x1/6"	78x1/6"	95x1/6"	110x1/4"	130x1/4"
R	3/8"	1/2"	3/4"	1"	1"1/4	1"1/2	2"	2"1/2	3"	4"
a	12	15	15	20	20	20	22	22	25	30
c	22	25	28	35	35	35	38	38	40	48

1812 KM/Ri

Pièce d'adaptation DIN/GAZ | Aanpassingstuk DIN/Gaz



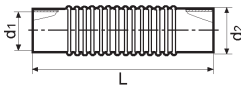
Inox 304L Poli/Gepolijst
Inox 316L Poli/Gepolijst



NW/DN	10	15	20	25	32	40	50	65	80	100
d1	10	16	20	26	32	38	50	66	81	100
d5Rd	28x1/8"	34x1/8"	44x1/6"	52x1/6"	58x1/6"	65x1/6"	78x1/6"	95x1/6"	110x1/4"	130x1/4"
R	3/8"	1/2"	3/4"	1"	1"1/4	1"1/2	2"	2"1/2	3"	4"
a	12	15	15	20	20	20	22	22	25	30
h	37	42	43	52	54	55	58	62	69	85

8450 S/S

Soufflet Inox 304 poli | Expansie balg Inox 304

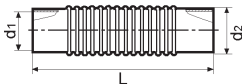


Inox 304

NW/DN	10	15	20	25	32	40	50	65	80	100
d1				26	32	38	50	66		
d2				30	36	42	54	70		
L				185	185	190	205	230		

8450 S/S

Soufflet Inox 316 poli | Expansie balg Inox 316

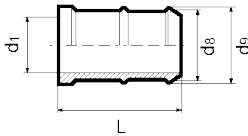


Inox 316

NW/DN	10	15	20	25	32	40	50	65	80	100
d1				25	31	37	49	66	81	100
d2				28	34	40	52	70	85	104
L				200	200	200	200	200	200	300

1100 S

Raccord olive à souder DIN 11854 | Lasslangpijpstuk DIN 11854



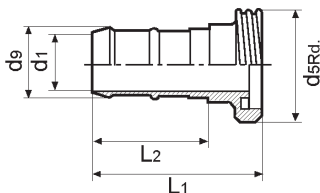
Inox 304L Poli/Gepolijst
Inox 316L Poli/Gepolijst



NW/DN	10	15	20	25	32	40	50	65	80	100
d1	10	16	20	26	32	38	50	66	81	100
d9	15	21	27	32	40	48	58	76	90	110
d5Rd	28x1/8	34x1/8	44x1/6	52x1/6	58x1/6	65x1/6	78x1/6	95x1/6	110x1/4	130x1/4
L1	50	60	70	80	90	105	120	140	160	180
L2	29	39	46	51	58	72	85	100	115	126

1101 G

Raccord olive fileté DIN 11854 | Slangpijpstuk DIN 11854



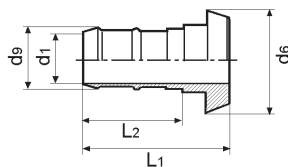
Inox 304L Poli/Gepolijst
Inox 316L Poli/Gepolijst



NW/DN	10	15	20	25	32	40	50	65	80	100
d1	10	16	20	26	32	38	50	66	81	100
d9	15	21	27	32	40	48	58	76	90	110
d6	22	28	36	44	50	56	68	86	100	120
L1	50	60	68	77	87	102	117	136	156	174
L2	33	43	50	55	62	76	89	104	119	130

1102 K

Raccord olive fileté DIN 11854 | Slangpijpstuk DIN 11854



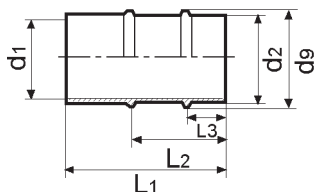
Inox 304L Poli/Gepolijst
Inox 316L Poli/Gepolijst



NW/DN	10	15	20	25	32	40	50	65	80	100
d1	10	16	20	26	32	38	50	66	81	100
d9	15	21	27	32	40	48	58	76	90	110
d6	22	28	36	44	50	56	68	86	100	120
L1	50	60	68	77	87	102	117	136	156	174
L2	33	43	50	55	62	76	89	104	119	130

1110 S

Raccord olive à souder "léger" | Slangpijpstuk "licht"

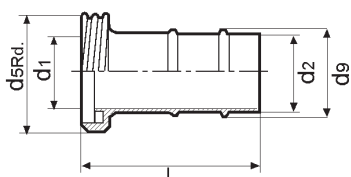


Inox 304L Poli/Gepolijst
Inox 316L Poli/Gepolijst

NW/DN	10	15	20	25	32	40	50	65	80	100
d1		16	20	26	32	38	50	66	81	100
d2		18	22	28	34	40	52	70	85	104
d9		21	25	31	37	43	55	74	89	108
L1		50	50	60	70	80	90	100	110	120
L2		32	32	35	40	45	45	50	55	65
L3		12	12	15	15	20	20	25	25	25

1111 G

Raccord olive fileté "léger" | Slangpijpstuk "licht"

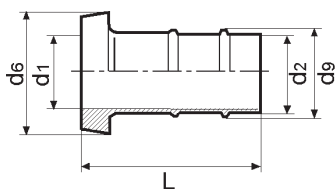


Inox 304L Poli/Gepolijst
Inox 316L Poli/Gepolijst

NW/DN	10	15	20	25	32	40	50	65	80	100
d1		16	20	26	32	38	50	66	81	100
d2		18	22	28	34	40	52	70	85	104
d9		21	25	31	37	43	55	74	89	108
L		63	63	75	85	95	106	117	127	140

1112 K

Raccord olive cônica "léger" | Slangpijpstuk "licht"

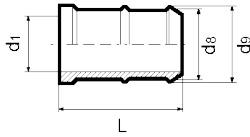


Inox 304L Poli/Gepolijst
Inox 316L Poli/Gepolijst

NW/DN	10	15	20	25	32	40	50	65	80	100
d1		16	20	26	32	38	50	66	81	100
d2		18	22	28	34	40	52	70	85	104
d9		21	25	31	37	43	55	74	89	108
L		63	63	75	85	95	106	117	127	140

1120 S

Raccord olive à souder "bière" | Lasslangpijpstuk "bier"

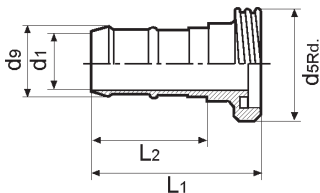


Inox 304L Poli/Gepolijst
Inox 316L Poli/Gepolijst

NW/DN	25	32	40	50	65	80	100
d1		28	32	45	60	74	93
d8		32	40	50	65	80	100
d9		34	43	53	68	83	103
L		65	79	92	108	127	136

1121 G

Raccord olive fileté "bière" | Slangdraadstuk "bier"

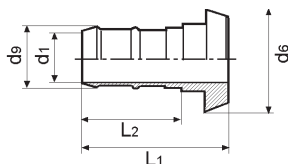


Inox 304L Poli/Gepolijst
Inox 316L Poli/Gepolijst

NW/DN	25	32	40	50	65	80	100
d1	22	28	32	45	60	74	93
d9	27	34	43	53	68	83	103
d6	44	50	56	68	86	100	121
L1	80	90	105	120	140	160	180
L2	63	70	84	97	113	132	141

1122 K

Raccord olive cônica "bière" | Slangkegelstuk "bier"



Inox 304L Poli/Gepolijst
Inox 316L Poli/Gepolijst

NW/DN	25	32	40	50	65	80	100
d1	22	28	32	45	60	74	93
d9	27	34	43	53	68	83	103
d6	44	50	56	68	86	100	121
L1	80	90	105	120	140	160	180
L2	63	70	84	97	113	132	141